



meet in

# SOUTHERN GRAMPIANS

YOUR GUIDE TO PLANNING BUSINESS EVENTS IN OUR REGION

THE GREATER HAMILTON REGION:

Hamilton / Dunkeld / Peshurst / Tarrington / Cavendish / Coleraine / Balmoral / Glenthompson / Byaduk / Branhholme



## CONTENTS

- 3 WELCOME
- 4 HELP TO PLAN YOUR EVENT
- 6 REGIONAL MAP
- 8 HAMILTON & DUNKELD MAPS
- 10 ITINERARY SUGGESTIONS
- 14 INDUSTRY STRENGTHS
- 16 VENUES
- 37 ACCOMMODATION
- 38 ACTIVITIES & ATTRACTIONS
- 48 SUPPLIERS
- 54 WHAT NEXT?
- 55 INDEX

**400**  
million year old  
landscapes



**16**

### COUNTRY CHARM

From those with a fascinating history to those with state-of-the-art facilities, our venues will surprise and delight.



**10**

### OUR INCREDIBLE NATURAL ASSETS

Make the most of a visit to the Grampians National Park (Gariwerd) as part of a team building retreat, or view other curated itineraries for various types of events, from conferences & meetings to incredible incentives.



**38**

### UNFORGETTABLE HIGHLIGHTS

Whether your group are explorers or wine-tasters, creatives or foodies, we have activities & attractions to suit.



**48**

### FOOD, WINE, STYLING...

Whatever you need, our local suppliers have you covered, and we know the right people to call.

meet in  
**SOUTHERN  
GRAMPIANS**



ABOVE

Watercolour artwork thanks to local artist, Rachel Zuch.

# meet in THE SOUTHERN GRAMPIANS REGION

The Southern Grampians, also known as the Greater Hamilton region, is a spectacular place to meet.

With landscapes dominated by the awe-inspiring Grampians ranges, picturesque waterfalls and volcanic red-gum dotted plains, meeting here is nothing short of memorable.

Hamilton is the region's geographic and business hub, surrounded by 10 distinctive towns and villages.

At the base of the mountains sits Dunkeld, a world class dining destination complemented by enriching local experiences that today's discerning business traveller yearns for.

Surrounding gems include Peshurst with its volcano, wine bar and botanic gardens, riverside Cavendish with its gourmet pub, and Germanic Tarrington with its Henty wineries.

Guests will love discovering Balmoral's Rocklands Reservoir, Bransholme's history, Byaduk's lava caves, Coleraine's chocolate factory or Glenthompson's muralled church, too. The region awaits!

### TRANSPORT

Hamilton is at the intersection of three major highways; Hamilton B140, Glenelg B160 & Henty A200.

Fly to Hamilton Airport from Melbourne in 45 minutes via a charter service or use the several local hire car, charter bus & coach companies available.

Daily V/Line coaches connect with trains from Ballarat, Ararat, Horsham, Warrnambool, Geelong, Melbourne & Mt Gambier.



POPULATION CATCHMENT  
**24,000**

### LOCATION

**295km**  
west of Melbourne

**500km**  
SE of Adelaide

### TIME ZONE



Victoria operates on Eastern Standard Time. Visitors from SA, WA & NT should move their clocks forward by half an hour when crossing the border into Victoria.

### INDUSTRY BASE



AGRICULTURE



MANUFACTURING



RETAIL



EDUCATION



HEALTH



TOURISM



FORESTRY



DIGITAL ECONOMY

### TRADITIONAL OWNERS

Southern Grampians Shire Council respectfully acknowledges the Gunditjmara, Tjap Wurrung and Bunganditj people, who are the Traditional Owners of the lands where we meet, visit, live and work. We pay our respects to ancestors and Elders, past, present and emerging.

We encourage those organising events in the Southern Grampians to connect with the **Registered Aboriginal Parties** relevant to your event locations to check who to acknowledge to incorporate welcoming protocols and to consider including tours on country to connect directly with Traditional Owners.

Our team are on hand to assist you should you require guidance.



# we can HELP PLAN YOUR EVENT

We know that organising an event in regional Victoria hinges on the relationships you have with locals you can trust.

## LET OUR TEAM ASSIST YOU

We can act as a free extension of your event planning team, connecting you with the right local contacts to find the best fit for your group's needs.

Southern Grampians Shire Council's dedicated Events Marketing & Development Officer is on hand as your go-to contact.

You are guaranteed to receive specialised & professional support targeted to your requirements. Our Events Officer can co-ordinate support from our broader Visitor Experience Team and work closely with you to make sure your event is a success.

## WHAT CAN WE DO TO ASSIST?

- Provide advice & referrals for venues, activities, accommodation, tourism experiences, suppliers & support services
- Assist to coordinate familiarisation tours and site inspections
- Prepare itineraries & pre/post tour options
- Assist to coordinate proposals & bid documents
- Prepare partner programs
- Provide an accommodation referral service through our freecall Visitor Information Centre
- Assist with applications for Council's Greater Grants funding
- Provide letters of support for external grant applications
- Connect you with local keynote speakers and industry experts
- Offer free event marketing
- Suggest destination specific corporate gift ideas
- Assist with delegate packs, stationary and print collateral.
- Provide print and digital promotional material and visual content for delegate boosting and pre-event marketing

## CONTACT US

Events Marketing &  
Development Officer

**03 5573 0239**

[events@sthgrampians.vic.gov.au](mailto:events@sthgrampians.vic.gov.au)

## RIGHT

Rural Women's Day event at  
Sterling Place, Dunkeld



## MAIN

Our Visitor Experience  
Team is here to help



# getting HERE & AROUND

Positioned centrally between Melbourne & Adelaide, the Southern Grampians region is perfectly placed to bring people together.



## KEY

- |                |                  |
|----------------|------------------|
| 1 HAMILTON     | 9 BRANXHOLME     |
| 2 DUNKELD      | 10 BYADUK        |
| 3 TARRINGTON   | 11 PORTLAND      |
| 4 PESHURST     | 12 PORT FAIRY    |
| 5 BALMORAL     | 13 WARRNAMBOOL   |
| 6 CAVENDISH    | 14 MOUNT GAMBIER |
| 7 GLENTHOMPSON | 15 HALLS GAP     |
| 8 COLERAINE    |                  |

BY ROAD	KM	TIME
HAMILTON TO:		
Melbourne	295	3 hr
Adelaide	500	6 hr
Ballarat	180	2 hr
Geelong	235	2 hr 45
Dunkeld	30	20 min
Halls Gap	95	1 hr 15
Horsham	130	1 hr 30
Portland	85	1 hr
Port Fairy	84	1 hr
Warrnambool	110	1 hr 15
Mount Gambier	132	1 hr 30
Coonawarra	136	1 hr 30
BY AIR		
FROM MELBOURNE:		
Hamilton Airport	295	45 min
FROM ADELAIDE:		
Hamilton Airport	500	1 hr 15
PUBLIC TRANSPORT		
FROM MELBOURNE:		
Hamilton Station	295	4 hr



KEY

- 1

ROYAL MAIL HOTEL
- 2

STERLING PLACE
- 3

GRAMPIANS RETREAT
- 4

HECC & SHOWGROUNDS
- 5

HPAC & CINEMA
- 6

HAMILTON GALLERY
- 7

CHEVALIER CENTRE & WCRCH
- 8

KANTOR FAMILY MPAC
- 9

HAMILTON RACING CLUB
- 10

HAMILTON GOLF CLUB
- 11

HIRL
- 12

ARRANDOOVONG HOMESTEAD
- 13

WDHS EDUCATION CENTRE
- 14

HAMILTON DISTRICT SKILLS CENTRE
- 15

SOUTH WEST TAFE
- 16

OBSIDIAN ROOM
- 17

GRANGE BURN MOTEL
- 18

HAMILTON LONSDALE MOTEL
- 19

BLUE MALT
- 20

ALEXANDRA HOUSE
- 21

PIERREPOINT WINES
- 22

VOLCANOES DISCOVERY CENTRE
- 23

OFF THE RAILS
- 24

THE DISTRICT COLLECTIVE
- 25

HAMILTON LINDOOR LEISURE & AQUATIC CENTRE
- 26

MELVILLE OVAL
- 27

PEDRINA PARK
- 28

HAMILTON HARNESS RACING CLUB
- 29

SOUTHERN GRAMPIANS WILDERNESS RESORT

See Venue section for full listings

HAMILTON



DUNKELD



We have over 150 venues throughout the 10 towns and villages of the Greater Hamilton region, including atmospheric halls, eateries, bars, clubrooms, school spaces and churches.

Contact us to find your perfect fit!



DISTANCE BETWEEN HAMILTON AND DUNKELD

30km 20 min drive

BY ROAD	KM	TIME (APPROX)
DUNKELD TO:		
Melbourne	265	2 hrs 45 mins
Ballarat	144	1 hr 35 mins
Geelong	200	2 hrs 25 mins
Halls Gap	64	45 mins
Hamilton	30	20 mins
Penshurst	30	20 mins
Cavendish	30	20 mins





itinerary  
suggestions

# MEET IN SOUTHERN GRAMPIANS

Our team can help you plan itineraries for all types of business events,  
according to your timeframe, budget, industry & interests.

## TOP

Guided group tastings at  
Bochara Wines, 10 minutes from  
Hamilton

## RIGHT

Taking in the view at the  
Wannon Falls, 7 minutes from  
Bochara Wines

*tailor made  
itineraries for you*



## LUXURY INCENTIVE TRIP

### Awe-Inspiring Aerials

Impress VIP arrivals with an unforgettable helicopter journey over the Grampians National Park & land at the picture-perfect scenic lookout of Mount Sturgeon (Wurgarri) or the impeccably manicured Mount Sturgeon Homestead lawn.

### Front Row Fine-Dining

Indulge with an eight course Chef's Tasting menu at the 2-hat Wickens at the Royal Mail Hotel. Sit in the kitchen at the Chef's Table for a front-row dining experience & elevate the degustation dining with local or international matched wines.

### Private Touring

Wake refreshed, discover the highlights of the Grampians National Park on foot with an eco-certified tour guide & relax in the hotel pool before a sunset cocktail.

## 2 DAY CONFERENCE

### CBD Convenience

Take over Hamilton's Cultural Arts Precinct utilising the flexible venue spaces of the adjoining Performing Arts Centre, Gallery & Cinema. Keynote speakers can enthral from the PAC stage, morning tea can be served in the bar/foyer & facilitators can run immersive presentations & interactive breakouts in the adjoining rooms & cinema.

### Gallery & Gala

Enjoy a behind-the-scenes tour of the Hamilton Gallery before your Gala Dinner next door in the PAC, where you're wined & dined with canapés & cool-climate Henty wines alongside live musical entertainment.

### Memorable Moments

Early birds can catch the sunrise over Lake Hamilton, hit a local gym or take in a morning yoga class before Day 2 of your conference. Brunch on-site in your central motel or in one of Hamilton's instagrammable cafés before your packed plenary. End with a memorable visit to a key attraction – we've highlighted the best on our website.

## TEAM BUILDING RETREAT

### Cabins & Camaraderie

Arrive in Dunkeld & feel city stresses melt away at Grampians Retreat. Break the ice on the adrenaline-inducing Giant Swing or Flying Fox before a shared meal & more team-building activities in this picturesque bush location in the Grampians National Park (Gariwerd).

### Fireside Fun

Toast marshmallows around a campfire with a local musician, see whipcracking in action or hear dreamtime stories & learn to play the didgeridoo with a local Traditional Owner.

### Grampians Peaks

Rise before dawn & hike Mt Sturgeon, Mt Abrupt or the Picaninny to watch sunrise over the mountains & greet the native wildlife en route back to your cabin. Gather for a group class run by a passionate local – archery, painting, yoga, abseiling, line dancing or guided ecology exploration perhaps!

## TOP

The adrenaline-inducing giant  
swing at Grampians Retreat

## LEFT

Memorable morsels from  
Wickens at the Royal Mail Hotel







## EXHIBITION OR EXPO

### Space & Light

Set up stallholders & exhibitors in our largest indoor venue; The Hamilton Exhibition & Conference Centre. Network in the sunny Atrium & enjoy lunch on the lawns, refreshed by visiting coffee vans.

### Early Evening Escapades

Post-event, take in a 1-hour activity from the curated list on our blog – from wineries & waterfalls to discovering murals & volcanic lookouts.

### Sunset Serenades

Arrive at dusk for a dinner with a difference - long tables under festoon lights in the Hamilton Botanic Gardens, with live music from the historic Rotunda perhaps?

## PARTNER PROGRAM

### Fairways & Laneways

Hit a round at one of our two golf clubs in Hamilton, or tee up at our many view-laden courses near the Grampians, before some retail-therapy amidst the street art & laneways of Hamilton CBD.

### Wine Time

Meet the wine-makers on a tour of the Henty wine region's 9 cellar doors & 2 vineyards, or north of Dunkeld head to Grampians wineries like Seppelt, touring the largest underground cellars in the Southern Hemisphere, or the 1866 wine cellars at Best's Great Western.

### Dinner & Drinks

Join delegate partners for an evening meal at one of our region's best restaurants, accompanied by bespoke cocktails.

## TEAM TRAINING

### Specialist Facilities

Take advantage of the computer labs, videoconferencing space and multiple classrooms for group learning at South West TAFE or WDHS in Hamilton.

### Creative Class

Purpose-built facilities offering unique opportunities for groups to get hands-on include the multiple cooking stations ready for classes at the Hamilton District Skills Centre or The Hamilton Alexandra College's Kantor MPAC, or small groups can paint or try pottery at the charming HIRL Complex.

### Private Dining

Take over a restaurant or a café after hours for a private dining experience, from Hamilton's Roxburgh House, Tosca Browns or Izzy's Restaurant to The Bunyip Hotel at Cavendish.

We can also assist you to cherry-pick the most fun & rewarding activities for partner programs & group travel planning of all kinds, from car rallies & family reunions to Christmas parties.

#### TOP

Group golf surrounded by gum trees

#### RIGHT

One of the many murals of the Hamilton Art Trail



#### MAIN

Get back to nature on a guided tour of the Grampians National Park (Garlwerd)



our region's

# INDUSTRY STRENGTHS

Western Victoria may be famed for it's awe-inspiring landscapes & iconic tourist attractions, but there are numerous fortes that our particular region is renowned for.

## CONNECT WITH EXPERTS

Hosting an industry-related event gives you the opportunity to take delegates from the classroom to the field to see best practice in action, to access local keynote speakers & to meet practitioners with Regional, State & National significance.

Our team can connect you to engaging Keynote Speakers and site visit opportunities across SE South Australia and Western Victoria. Tap into our local contacts across the broader region, including Budj Bim, the Great Ocean Road, Limestone Coast, Goldfields & Grampians regions.

From industry leaders and researchers to accomplished adventurers, authors, sportspeople, volcanologists & artists, each has fascinating insights to share with your delegates.

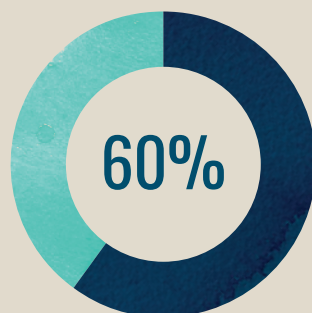
## FOOD & FIBRE



Victoria's first area of pastoral settlement 160 years ago & once the wool capital of the world, Hamilton produces 15% of Australia's wool clip, though forward-thinking farmers have since led diversification & innovation in agriculture, horticulture & viticulture. Agriculture accounts for 80% of regional land use in the Southern Grampians Shire & is the largest employer (20.3%). Our properties are home to one of the world's densest populations of broadacre livestock farming, with over **1 million lambs, 2.3 million sheep** and **120,000 head of beef cattle**. Many food & fibre related events incorporate visits to farms, stud breeders or the Hamilton Regional Livestock Exchange (HRLX), the second-largest sheep selling centre in VIC/SA.

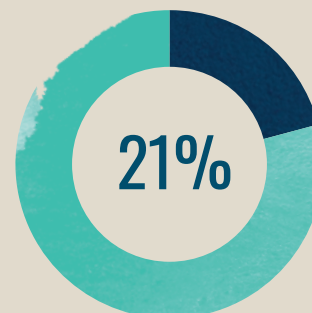
**Southern Grampians is part of the Great South Coast, Victoria's largest food & fibre region, producing \$2.3 billion in agricultural output annually.**

This accounts for



of the region's GDP

Also



of total jobs

Hamilton sells **1 million sheep & 50 thousand cattle each year**

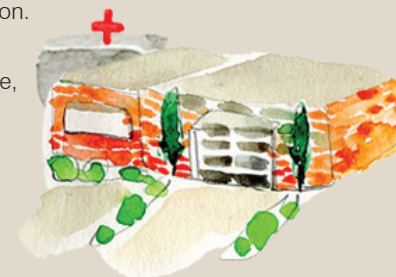
## HEALTH

Our strengths in healthcare & social assistance can be seen through our diversity of specialists, our range of facilities & our enviable reputation.

Hamilton is the home of the fully-accredited, multi-campus Western District Health Service, which includes:

- Hamilton Base Hospital
- Penshurst District Health Service
- Coleraine District Health Services
- Frances Hewitt Community Centre

Hamilton is linked with Deakin University through Deakin Rural Health research programs, is home to the National Centre for Farmer Health, & our region also boasts the Balmoral community's Bush Nursing Centre.



### Hamilton Base Hospital:

**75**  
acute beds

**90**  
aged care beds

a range of  
community  
based  
services

**7000**  
admissions

**200**  
deliveries  
per year

**3**  
resident  
surgeons &  
a consultant  
anesthetist

**3000**  
surgical  
procedures  
annually

## DIGITAL ECONOMY

Southern Grampians Shire Council has been officially recognised as a leader in digital innovation for regional Australia at the national awards for Local Government, winning a Digital Innovation Award for our work becoming a Smart Region. This includes investing in projects from building an Internet of Things & free public Wi-Fi in every town, allowing gateways to connect to the LoRaWAN network, to localised weather stations & sensors spanning CBD lighting & parking to devices tracking soil moisture, bin capacity & foot traffic. Home of the Digital Innovation & Smart Agriculture Festival, we can connect you with the entrepreneurial innovators leading the charge for future rural digital economies.



Ranking

**#4**

in the state for LoRaWAN Network coverage behind Melbourne, Geelong & Ballarat



## MANUFACTURING

In our broad manufacturing industry, local enterprises combine innovation with the latest technology to deliver world-class products. Visit award-winning local businesses like Waltanna Farms, who have won major international design & manufacturing contracts, and businesses manufacturing niche products including Unicraft, Ultracut & Platinum Products.



## EDUCATION

We are a Centre of Educational Excellence, with the highest ratio of private schools to head of population in Australia. Our private schools are strongly connected internationally & boast impressive facilities bookable by groups, including the well-appointed Hamilton & Alexandra College, with its Equestrian Centre & MPAC. Monivae College boasts the Western Country Regional Cricket Hub and Chevalier Centre, & both have boarding facilities. Good Shepherd College specialises in agricultural experiences with its own operational farm available for group visits. We also have 5 specialist tertiary education providers, including South West TAFE and Rural Industries Skills Training.

**16**  
Primary  
Schools

**6**  
Secondary  
Schools

**5**  
Tertiary  
education & skills  
training providers



# our amazing VENUES

Historic or contemporary? Expansive or intimate? Central or secluded?  
The choice is yours, with over 150 venues available throughout the region.

## DISCOVER OUR RANGE OF VENUES

Whether you're looking for an outdoor space to bring together the masses, an inspiring natural setting to open up your thinking, an indoor auditorium or a meeting room with a view, we can accommodate your event in a venue that suits your needs. Here we've curated 29 of our most used event venues alongside key information to help you find the perfect fit.

We also have 89 venue spaces in the smaller towns and villages of the region, from community halls and sports clubrooms to school spaces and historic courthouses.

These buildings are perfect for pop-up satellite events accompanying your main function, community engagement meetings and intimate performances, or to make use of when visiting nearby hidden gems.

We also have a number of cafés, restaurants and wineries with individual private dining spaces, beer gardens and bar spaces available for hire, many of whom can host events outside of normal service hours for private groups.

Contact us to discuss your options beyond those venues listed in this Planners Guide!

## ICON LEGEND

  
Accommodation

  
Auditorium

  
Activities On-site

  
Conference /  
Exhibition Space

  
Restaurant / Bar

  
Sport Facilities

  
Instagram

  
Wi-Fi

  
Facebook








  
Twitter

  
Commercial  
Kitchen

## A NOTE ON CATERING

If 'Catering Available' is ticked in the venue's listing, this means the venue can either cater your event in-house or can organise catering by an external supplier. Contact them directly to discuss!

## venues overview

VENUE	LOCATION								PAGE
Royal Mail Hotel	Dunkeld	✓		✓	✓		✓		18
Sterling Place Community Centre	Dunkeld		✓		✓		✓	✓	19
Grampians Retreat	Dunkeld	✓	✓		✓	✓	✓		20
Hamilton Exhibition & Conference Centre & Showgrounds	Hamilton		✓				✓		21
Hamilton Performing Arts Centre & Cinema	Hamilton		✓	✓	✓		✓	✓	22
Hamilton Gallery	Hamilton		✓		✓				23
Chevalier Centre & Western Country Regional Cricket Hub	Hamilton	✓	✓		✓	✓	✓	✓	24
Kantor Family Music & Performing Arts Centre	Hamilton	✓	✓		✓	✓	✓	✓	25
Hamilton Racing Club	Hamilton		✓	✓			✓		26
Hamilton Golf Club	Hamilton		✓	✓	✓	✓	✓		26
Hamilton Institute of Rural Learning	Hamilton		✓		✓				27
Arrandoovong Homestead	Branxholme		✓	✓					27
WDHS Education Centre	Hamilton		✓				✓	✓	28
Hamilton District Skills Centre	Hamilton		✓		✓		✓	✓	28
South West TAFE - Hamilton Campus	Hamilton		✓		✓				29
Obsidian Room	Hamilton	✓		✓	✓				29
Grange Burn Motel	Hamilton	✓	✓	✓			✓		30
Hamilton Lonsdale Motel	Hamilton	✓	✓	✓					30
Blue Malt	Hamilton		✓	✓			✓		31
Alexandra House	Hamilton		✓	✓			✓		31
Pierrepoint Wines	Tarrington	✓	✓	✓	✓				32
Volcanoes Discovery Centre	Penshurst		✓		✓			✓	32
Off the Rails	Dunkeld		✓		✓				33
The District Collective	Hamilton		✓						33
Hamilton Indoor Leisure & Aquatic Centre	Hamilton		✓	✓	✓	✓	✓		34
Melville Oval	Hamilton			✓		✓	✓		34
Pedrina Park	Hamilton					✓			35
Hamilton Harness Racing Club	Hamilton		✓	✓					35
Southern Grampians Wilderness Resort	Hamilton	✓	✓	✓	✓		✓		36

RIGHT  
The Hamilton Performing Arts  
Centre Forecourt at dusk

TOP  
Wickens Private Dining Room at  
the Royal Mail Hotel



# Royal Mail Hotel

A: 98 Parker St, Dunkeld  
VIC 3294  
T: 03 5577 2241  
E: relax@royalmail.com.au  
W: royalmail.com.au

## Quick Facts

MAX ACCOMMODATION

120



ROYAL  
MAIL  
HOTEL  
DUNKELD



## LOCATION:

Ideally located at the southern tip of the spectacular Grampians National Park in the centre of Dunkeld, Royal Mail Hotel is one of Victoria's premier regional escapes.

ROOM	SIZE (M <sup>2</sup> )	THEATRE	CLASS ROOM	BOARD ROOM	DINING	COCKTAIL	CATERING AVAILABLE	ACCOMM ON SITE	PARKING	DISABILITY ACCESS	EQUIPMENT AVAILABLE
Mount Sturgeon Homestead Lawn	300	-	-	-	200	400	✓	✓	✓	✓	-
Mount Sturgeon Homestead	30	-	-	10	30	-	✓	✓	✓	✓	✓
Wickens Private Dining Room	8	-	-	-	14	-	✓	✓	✓	✓	✓
Parker Street Lounge Meeting Room	10	20	20	20	20	-	✓	✓	✓	✓	✓
Wine Cellar	30	-	-	-	40	40	✓	✓	✓	✓	✓
Wickens Exclusive Use	80	-	-	-	50	-	✓	✓	✓	✓	✓
Parker Street Project Exclusive Use	80	-	-	-	80	-	✓	✓	✓	✓	✓

## VENUE DESCRIPTION:

Royal Mail Hotel offers a one-of-a-kind experience celebrating excellence in food, wine and nature. Located a short drive from the hotel is the 1800's Mount Sturgeon Homestead. With 70 acres of manicured lawns, gardens and accommodation for up to 12, the homestead offers an idyllic regional Victorian getaway, event venue or a site for your next corporate retreat.

## ACCOMMODATION FACILITIES:

A wide range of luxury accommodation options for up to 120 guests ranging from deluxe suites through to cottage accommodation at Mt Sturgeon Station. Deluxe Mountain View Rooms and One and Two Bedroom Apartments.

## OTHER FACILITIES/TOURS:

Experience unforgettable dining across two restaurants with menus fed by the best in-season produce from the Royal Mail Kitchen Garden. The two-hat Wickens at Royal Mail Hotel signature dining experience is an eight course Chef's Tasting menu with matched wines from the extensive wine cellar. Parker Street Project offers à la carte seasonal dining in a relaxed environment. Both restaurants offer private dining and exclusive use options.

A wide range of tours are offered including a Kitchen Garden Tour, Wine Cellar Tutorial and Native Wildlife Feeding Tour.

# Sterling Place Dunkeld Community Centre

A: 14 Sterling St Dunkeld,  
VIC 3294  
M: 0412 855 359  
T: 03 5577 2333  
E: info@sterlingplace.com.au  
W: sterlingplace.com.au

## Quick Facts

MAX THEATRE

300



sterlingplace  
dunkeld community centre



## LOCATION:

Located within the delightful town of Dunkeld, nestled at the stunning southern gateway to the Grampians (Gariwerd) National Park.

A short walk from Dunkeld's accommodation, eateries and attractions, including the Royal Mail Hotel, a pleasant 5 minute stroll away.

ROOM	SIZE (M <sup>2</sup> )	THEATRE	CLASS ROOM	BOARD ROOM	DINING	COCKTAIL	CATERING AVAILABLE	ACCOMM ON SITE	PARKING	DISABILITY ACCESS	EQUIPMENT AVAILABLE
John Myers Room	285	300	200	50	250	400	✓	-	✓	✓	✓
Memorial Hall & Chapel	190	240	100	60	80	300	✓	-	✓	✓	✓
Supper Room	60	70	30	30	20	50	✓	-	✓	✓	✓
Green Room	33	35	12	20	20	50	✓	-	✓	✓	✓
Consulting Rooms (x2)	11 (each)	-	-	-	-	-	✓	-	✓	✓	✓

## VENUE DESCRIPTION:

Sterling Place, Dunkeld Community Centre is a purpose-built accessible event space which can comfortably accommodate groups ranging from small gatherings to up to 400 people. Offering a range of modern multi-purpose spaces for corporate events, expos, weddings, workshops, visiting consultants and community functions.

The light-filled John Myers Room provides the ideal space for conferences and large gatherings, with 5 breakout partitions adding configuration flexibility. The Memorial Hall is a lofty space often used for weddings and community functions, performances, exhibitions and trade show booths. Its doors open onto well-maintained gardens perfect for drinks. Add multiple break out rooms perfect for morning teas and workshops, a bar and commercial kitchen; this centre offers a multi-purpose flexible event space which is well equipped, accessible and well maintained.

## TECHNICAL FACILITIES:

The John Myers Room and Memorial Hall have in-built projectors and large drop down screens, plus AV equipment including hand held and lapel microphones. Portable projectors are available at no extra charge for use in the meeting rooms. Wi-Fi is freely available throughout the facility.

## OTHER FACILITIES:

The facility manager is on-site and available to assist. Hirers can self-cater or use a catering company of their choice. A car park provides free on-site parking. Lecterns, whiteboards, crockery, cutlery, glassware, table linen, round tables, chairs and trestle tables are available at no extra charge. A stage and dance floor is available for specialist events, and group activities can be arranged on request.



# Grampians Retreat

A: 110 Wrights Rd, Dunkeld  
VIC 3294  
T: 03 5577 2257  
E: info@grampiansretreat.com.au  
W: www.grampiansretreat.com.au

## Quick Facts

MAX DINING

200

MAX THEATRE

200



## LOCATION:

Idyllically located at the base of Mt Abrupt on the Grampians Peaks Trail, the beautiful Grampians Retreat is 5km from the picturesque township of Dunkeld. On 80 acres of natural bushland, river flats and wetlands, Grampians Retreat is bordered by the Wannon River and the Grampians NP. With abundant flora and wildlife, guests can explore numerous walking trails and reach three of the Grampians peaks from the property. Between the friendly local wildlife, rare birds, over 60 types of orchids, significant First Australian landmarks and other natural wonders on the property, it is the ultimate bush venue for any event.

## VENUE DESCRIPTION:

A secluded bush retreat where you can enjoy sole occupancy for your events, team-building, group retreats, meetings, workshops or conferences. The fully equipped conference room seats approx. 200 people, with a separate dining hall and an adjacent outdoor BBQ area, commercial kitchen, outdoor meeting/retreat spaces and accommodation for 88 guests in cabins, and more with camping options. You can have your event fully catered or enquire about our self-cater options.

## TECHNICAL FACILITIES:

AV equipment for your laptop, data projector and overhead screen with surround sound (also acts as an indoor cinema). Wi-Fi.

## OTHER FACILITIES:

Additional on-site activities provide opportunities for team-building and for getting back to nature. Highlights include adrenaline-fuelled individual challenges like the Giant Swing, Flying Fox, Abseiling, Canoeing and Rock Climbing. Group challenges and activities including a low ropes course, orienteering, Mt Abrupt hike, Mt Sturgeon hike, frisbee golf and a group initiatives course including four-way tug of war. There are several bushwalks on the property and there is a volleyball court, basketball hoop, archery course, table tennis tables and a solar heated swimming pool. Night-time activities including reflector trails, wildlife viewing, mobile zoo, musical entertainers or taking in the amazing night sky by the campfire. Yoga on the river flats with Mt Abrupt in the background is a truly unique and peaceful experience, many craft groups transform the conference room into a giant studio and ecological students turn it into a study laboratory. Whatever your needs, Grampians Retreat is such a flexible space, it can cater for almost anything! It truly is a bush home away from home.

ROOM	SIZE (M <sup>2</sup> )	THEATRE	CLASS ROOM	BOARD ROOM	DINING	COCKTAIL	CATERING AVAILABLE	ACCOMM ON SITE	PARKING	DISABILITY ACCESS	EQUIPMENT AVAILABLE
Conference Room	225	200	100	50	120	200	✓	✓	✓	✓	✓
Dining Room Dining Room	82	-	60	40	90	90	✓	✓	✓	✓	✓
Outdoor BBQ Area	70	-	-	-	70	70	✓	✓	✓	✓	✓
Outdoor spaces	-	100	100	-	200	500	✓	✓	✓	✓	✓

# Hamilton Exhibition & Conference Centre

A: Horner St, Hamilton  
VIC 3300  
T: 03 5572 2563  
E: info@hamiltonshowgrounds.com.au  
W: www.hamiltonshowgrounds.com.au

## Quick Facts

MAX THEATRE

800



## LOCATION:

Our region's largest indoor venue is located at the Hamilton Showgrounds, 1km from the CBD. This impressive multipurpose facility is opposite the Indoor Leisure & Aquatic Centre & walking distance to most accommodation providers.

## VENUE DESCRIPTION & TECHNICAL FACILITIES:

**Hamilton Exhibition & Conference Centre:** An accessible, well-equipped 955m<sup>2</sup> facility which can be partitioned into three separate function spaces; Dundas, Napier & the Fashion Pavilion. The space can be configured to suit functions for up to 800 people, including conferences, dinners, fashion shows, expos & weddings. The commercial kitchen adjoins the Dundas room via a bar/counter or can service each room independently via a light-filled glass Atrium. The Atrium provides an ideal area for registrations, networking drinks & pre-event functions, leading out to a large lawn perfect for marquees, pop-up bars or visiting coffee vans.

**Hamilton Showgrounds:** 12ha of grass & gravel outdoor space commonly used for agricultural events, trade shows & expos, circuses, markets & car shows. Secure buildings include the Red Shield Meeting Room & 2 sheltered Pavillions, plus ovals & exhibition facilities suited to animal displays & demonstrations. 40 power bollards, 2 floodlights & toilet facilities perfect for trade sites, portable accommodation & entertainment.

## TECHNICAL FACILITIES:

In-built projector screens in the Dundas & Napier Rooms, with a large screen & heavy duty lighting bars in the Fashion Pavillion, with free Wi-Fi & heating/cooling throughout.

## OTHER FACILITIES:

Large commercial kitchen complete with crockery, cutlery, glassware, salt & pepper shakers, creamers, sauce dishes, trays, table numbers & table linen. 30 round tables, 300 chairs, 40 trestle tables, stages, lecterns & dance floor, plus full AV facilities & a range of equipment for specialist events.

ROOM	SIZE (M <sup>2</sup> )	THEATRE	CLASS ROOM	BOARD ROOM	DINING	COCKTAIL	CATERING AVAILABLE	ACCOMM ON SITE	PARKING	DISABILITY ACCESS	EQUIPMENT AVAILABLE
HECC (Total)	955	800	400	-	500	800	✓	-	✓	✓	✓
Dundas	140	100	40	40	80	150	✓	-	✓	✓	✓
Napier	140	100	40	40	80	150	✓	-	✓	✓	✓
Atrium	125	60	-	-	-	150	✓	-	✓	✓	✓
Fashion	450	550	300	-	280	700	✓	-	✓	✓	✓



# Hamilton Performing Arts Centre & Cinema

**A:** 109 & 113 Brown St, Hamilton  
VIC 3300  
**T:** 03 5573 0429  
**E:** info@hamiltonpac.com.au  
**W:** www.hamiltonpac.com.au  
www.hamiltoncinema.com.au

## Quick Facts

MAX THEATRE

500



## LOCATION:

The Hamilton Performing Arts Centre & the Hamilton Cinema are within the Cultural Arts Precinct of Hamilton CBD, bookending the Hamilton Gallery & Library. All venues are accessible & central to accommodation & eateries, with ample car parking nearby.

## VENUE DESCRIPTION & TECHNICAL FACILITIES:

Experienced staff, substantial equipment & versatility of multiple event spaces make this precinct suitable for a range of events from small meetings to large conferences & unique, immersive itinerary cornerstones. The PAC & Hamilton Cinema are connected through a first floor foyer, with bar & kitchenette area perfect for pre-event registrations, meetings, break-outs & networking drinks.

**The Hamilton Performing Arts Centre** has 3 main event spaces, accessed via a welcoming foyer with ticketing/registration box office, café/bar & kitchenette. The Auditorium has 500 fixed, tiered seats & a ground-level accessible stage. Immersive presentations can make use of the data projector & stage-width screen, concert-quality sound system, lapel/radio microphones & the ability to record or live stream sessions. The Function Room is a large, bright space with adjoining commercially equipped kitchen. This multi-purpose space comes with a 3m wide screen, surround sound, & picture rails. The Ted Kenna VC Meeting Room is an adjoining meeting space with data projector perfect for smaller meetings & break-outs or refreshment service.

**The Hamilton Cinema** boasts an intimate 121-seat theatre for engaging presentations on the big screen, plus a versatile lounge with kiosk for fresh popcorn.

## OTHER FACILITIES:

All spaces are wheelchair accessible, and can make use of projectors, portable screens, lecterns, whiteboards, microphones, free Wi-Fi & audio loops. Hire can include tables, chairs, raised staging units, commercial kitchen, tea/coffee making facilities or utilise our online ticketing system.

ROOM	SIZE (M <sup>2</sup> )	THEATRE	CLASS ROOM	BOARD ROOM	DINING	COCKTAIL	CATERING FACILITIES	ACCOMM ON SITE	PARKING	DISABILITY ACCESS	EQUIPMENT AVAILABLE
Auditorium	396	500	-	-	-	-	-	-	✓	✓	✓
Function Room	312	300	-	-	220	400	✓	-	✓	✓	✓
Ted Kenna VC Room	100	100	50	30	-	100	✓	-	✓	✓	✓
Hamilton Cinema Theatre	140	121	-	-	-	-	✓	-	✓	✓	✓
Hamilton Cinema Foyer	110	100	60	20	30	121	✓	-	✓	✓	✓

# Hamilton Gallery

**A:** 107 Brown St, Hamilton  
VIC 3300  
**T:** 03 5573 0460  
**E:** info@hamiltongallery.org  
**W:** www.hamiltongallery.org

## Quick Facts

MAX DINING

50

MAX THEATRE

80



## LOCATION:

Hamilton Gallery is located in the heart of town, between the Performing Arts Centre & the Library. It is close to cafés, restaurants, hotels, the shopping centre & is within easy walking distance of Hamilton's beautiful Botanic Gardens.

ROOM	SIZE (M <sup>2</sup> )	THEATRE	CLASS ROOM	BOARD ROOM	DINING	COCKTAIL	CATERING AVAILABLE	ACCOMM ON SITE	PARKING	DISABILITY ACCESS	EQUIPMENT AVAILABLE
First Floor: Taylor Gallery	177	40	30	-	-	50	-	-	✓	✓	✓
First Floor: Gaussen Gallery	141	30	30	-	-	30	-	-	✓	✓	✓
Ground Floor: Ashworth Gallery	101	80	80	-	50	70	-	-	✓	✓	✓
Ground Floor: Shaw Gallery	133	-	30	-	50	80	-	-	✓	✓	✓



## VENUE DESCRIPTION:

Hamilton Gallery is the most significant public cultural facility in the Greater Hamilton region. With 7 colourful, accessible, light-filled spaces spread over two levels, the Gallery is a flexible & inspiring event space for professional or casual events from conferences to cocktails. From our street-art laden frontage guests enter through a light-filled atrium connecting to the Library & Gallery into the **Shaw Gallery**, complete with reception-turned registration desk. This leads through the colourful **Education Gallery**, used as a kids art space, into the **Ashworth Gallery** (above), which is ideal for presentations. Take the lift or ascend the spiral stairway past the mezzanine to the **Barber Gallery**, leading into two larger spaces; **Gaussen Gallery** and **Taylor Gallery** (left), connected by a small studio space ideal for break-outs. Contact our team to discuss options available for your event considering current exhibition programming.

## TECHNICAL FACILITIES:

Portable projector screens, lecterns, AV equipment, whiteboard & free Wi-Fi throughout. We can work with the PAC for computerised event ticketing solutions, stages, access to commercial kitchen & other infrastructure on request.

## OTHER FACILITIES:

Guided tours for small groups can offer fascinating insights into the Gallery's 9000+ piece collection & touring exhibitions, or we can arrange guest speakers, films & artist workshops. Ample parking for cars & coaches, toilets, tea/coffee facilities, tables, chairs, glasses & crockery. Catering, local wine tastings/pop-up bars & staffing can be arranged.



# Chevalier Centre & Western Country Regional Cricket Hub

## Monivae College

A: 133 Ballarat Rd, Hamilton  
VIC 3300  
T: 03 5551 1200  
E: reception@monivae.vic.edu.au  
W: www.monivae.com

## Quick Facts

MAX DINING

350



## LOCATION:

This facility is on the site of a large boarding school on Ballarat Road at the entrance to Hamilton – easily accessible by coach or car and a short walk from the centre of Hamilton.

## VENUE DESCRIPTION:

**Chevalier Centre:** The Chevalier Centre at Monivae College can hold dinners, balls, conferences, performances, sporting events and business events of any kind. Large spaces include two full size stadiums, including one with tiered fully retractable seating for over 700. An additional 300 chairs can be included in this venue. There is also a large reception/foyer area, seminar room seating 60, mezzanine and lecture theatre for 50+ and a Performing Arts Centre with seating for over 200, complete with changing rooms.

**Western Country Regional Cricket Hub:** The just opened Pavilion is set in a secluded area away from the main school buildings, overlooking the large sports oval and Hamilton city in the distance. An open indoor space is suitable for board meetings, lectures, and small conferences. The glass floor to ceiling bifold doors allow plenty of natural light and open to a large deck area. A full kitchen is also available.

A large carpark on-site and capacity for bus parking makes accessing the venue easy. As a boarding school Monivae College has some flexibility to provide accommodation and meals on-site.

## TECHNICAL FACILITIES:

Conference and data facilities are all available including sound and projection, plus Wi-Fi connectivity.

## OTHER FACILITIES:

2 full size stadiums, seminar room, large foyer space, full commercial kitchen, toilet and shower facilities plus a range of large outdoor spaces external to the Chevalier Centre. Fully equipped gym room, 25 metre indoor heated pool and mindfulness room perfect for group yoga or meditation. Accommodation for up to 160 is available in school holidays in the on-site dormitories.

ROOM	SIZE (M <sup>2</sup> )	THEATRE	CLASS ROOM	BOARD ROOM	DINING	COCKTAIL	CATERING AVAILABLE	ACCOMM ON SITE	PARKING	DISABILITY ACCESS	EQUIPMENT AVAILABLE
Chevalier Centre	-	700	1,000	200	350	750	✓	✓	✓	✓	✓
Western Country Regional Cricket Hub	50	50	30	20	50	80	✓	✓	✓	✓	✓

# The Kantor Family Music and Performing Arts Centre

## The Hamilton & Alexandra College

A: 1 Chaucer St, Hamilton  
VIC 3300  
T: 03 5572 1355  
E: mpac@hamiltoncollege.vic.edu.au  
W: hamiltoncollege.vic.edu.au

## Quick Facts

MAX DINING

200



## LOCATION:

The Hamilton and Alexandra College MPAC is located 200 metres from Hamilton's CBD and is within easy walking distance of accommodation and the town's amenities. There is ample on and off street parking available for guests.

## VENUE DESCRIPTION:

The Hamilton and Alexandra College is an independent, co-educational day and boarding school dating back to 1871, boasting a Music & Performing Arts Centre with multiple event spaces. The 468 seat tiered **Simons Auditorium** provides ample space for performances, presentations and panel discussions, with an additional 50 loose seats available in the orchestra pit. The **Tim Murray Room** offers seating for 320 guests, or catering for 200 guests using the attached commercial kitchen facilities. The venue also offers multiple break-out rooms for varied uses, including a multi-station kitchen ideal for group classes, a box office/ticketing registration area, classrooms, dressing rooms and standby rooms.

## TECHNICAL FACILITIES:

Extensive AV equipment is available including data projectors, large drop-down screens and presentation outlets in all major spaces, plus PA and lectern. The auditorium is supported by professional lighting and sound equipment, featuring full mixing and recording ability from a dedicated control booth, as well as front of house and stage management facilities for the entire venue.

## OTHER FACILITIES:

Tables and chairs can be provided for a catered function for up to 200 individuals with crockery, cutlery and glassware available. The on-campus **Geoff Handbury Sports Centre** boasts indoor/outdoor facilities including 2 multipurpose courts, one with 400 fixed tiered seats, 2 ovals, 1 turf wicket, 5 tennis courts, climbing/abseiling wall, hockey field and all-weather sports field, plus nearby Equestrian centre. Boarding facilities for 150may be available during non-school term time.

ROOM	SIZE (M <sup>2</sup> )	THEATRE	CLASS ROOM	BOARD ROOM	DINING	COCKTAIL	CATERING AVAILABLE	ACCOMM ON SITE	PARKING	DISABILITY ACCESS	EQUIPMENT AVAILABLE
Simons Auditorium	120	468	-	-	-	-	-	✓	✓	✓	✓
Tim Murray Room	196	320	-	-	200	-	✓	✓	✓	✓	✓
Shilliday Room	40	-	-	-	-	40	✓	✓	✓	✓	✓
Bob Henderson Orchestra Room	99	50	-	-	-	-	-	✓	✓	✓	✓





**A:** Henty Hwy, Hamilton VIC 3300  
**T:** 03 5572 1268  
**E:** hamilton@countryracing.com.au  
**W:** www.countryracing.com/hamilton



ROOM	SIZE (M²)	THEATRE	CLASS ROOM	BOARD ROOM	DINING	COCKTAIL	CATERING AVAILABLE	ACCOMM ON SITE	PARKING	DISABILITY ACCESS	EQUIPMENT AVAILABLE
Puramaka Room	180	160	80	40	130	200	✓	-	✓	✓	✓
Sir Agrifo	200	150	80	40	120	180	✓	-	✓	✓	✓
Star Apex	270	120	60	30	100	150	✓	-	✓	✓	✓

## Hamilton Racing Club

**LOCATION:** 5 minutes drive from the CBD in a spacious location with sweeping entrance, lush gardens, ample free parking and coach space.

**VENUE DESCRIPTION:** Three high quality venues plus multiple outdoor spaces ensure adaptability for all functions and events. With a large feature bar and a full wall of windows taking in the magnificent view of the racecourse and mounting yard, the **Puramaka Room** is modern and sleek ready for your next corporate event, dinner or wedding. The **Sir Agrifo Room** and **Apex Star** are connected by a corridor but can be packaged together. The Sir Agrifo Room is light filled by a wall of windows overlooking a wooden deck spanning the length of the room, allowing guests to take in the rose garden and luscious green racetrack. The Apex Star room is underneath the heritage listed grandstand and features painted bluestone walls and wooden beams in a vintage-inspired space perfect for weddings or social events.

**OTHER FACILITIES:** We have a large outdoor beer garden (The Shed) and expansive lawn areas suitable for marquees and team building activities. Various furniture options include wine barrels, umbrellas, tables and chairs, and equipment includes large plasma screen TVs in each room and PA systems. The Club is fully licensed or offers a BYO package, with catering facilities on-site and ready assistance of our venue manager.



**A:** 170 Rippon Rd, Hamilton VIC 3300  
**T:** 03 5571 2644  
**E:** admin@hamiltongolfclub.com.au  
**W:** www.hamiltongolfclub.com.au



ROOM	SIZE (M²)	THEATRE	CLASS ROOM	BOARD ROOM	DINING	COCKTAIL	CATERING AVAILABLE	ACCOMM ON SITE	PARKING	DISABILITY ACCESS	EQUIPMENT AVAILABLE
Function Centre	-	200	-	-	130	200	✓	-	✓	✓	✓

## Hamilton Golf Club

**LOCATION:** Located 1.5km east of Hamilton CBD in a quiet, leafy location with ample off-street parking for cars & coaches. Walking distance to accommodation operators & eateries, only 10 minutes' walk to Lake Hamilton & the Ansett Museum.

**VENUE DESCRIPTION:** This welcoming venue is fully accessible, with a large function room that can be partitioned into two spaces, joined by a recently refurbished bar.

The wall-to-wall full length windows look out onto the 18-hole grass greens, perfect for a post-event hit of golf or spacious enough to activate with lawn games, additional marquees or live music from the balcony. The Verandah can provide a lovely area to have a BBQ right next to the practice putting green, & evening functions can take in the magnificent up-lit red gum.

Our staff can assist you to arrange corporate golf days, conferences, meetings, performances & celebrations of all kinds. Caterers can utilise our commercial kitchen for seated or standing functions of all kinds, & we can provide bar facilities & staff as required.

**TECHNICAL FACILITIES:** Projector screen, TV, whiteboard, lectern, microphones & free Wi-Fi.

**OTHER FACILITIES:** Tables, chairs, crockery & barware can be provided for events with up to 130 seated guests.



**A:** 333 Nth Boundary Rd, Hamilton VIC 3300  
**T:** 03 5572 3699  
**E:** info@hirl.org.au  
**W:** www.hirl.org.au



ROOM	SIZE (M²)	THEATRE	CLASS ROOM	BOARD ROOM	DINING	COCKTAIL	CATERING AVAILABLE	ACCOMM ON SITE	PARKING	DISABILITY ACCESS	EQUIPMENT AVAILABLE
Function Hall	113	150	-	-	80	-	-	-	✓	✓	✓
Dining Room	44	60	-	-	30	-	-	-	✓	✓	✓
Bandicoot Room	78	60	-	-	30	-	-	-	✓	✓	✓
Meeting Room	36	15	-	-	-	-	-	-	✓	✓	✓
Art Rooms (2)	63/63	60	-	-	-	-	-	-	✓	✓	✓

## Hamilton Institute of Rural Learning Inc. - HIRL

**LOCATION:** A tranquil oasis on the edge of Hamilton surrounded by community parklands.

**VENUE DESCRIPTION:** This unique mud-brick complex offers a memorable venue for conferences, seminars, meetings, weddings & expos. The largest indoor space is the atmospheric, timber-lined Function Hall, which attaches to a kitchen with stoves, warmers, microwave & fridges, and a dining (lounge) room, ideal for break-outs. A sheltered walkway connects to a second seminar room (Bandicoot Room), with wall-mounted projector screen, log fire and attached kitchenette.

A separate building comprises two large art/pottery rooms with kitchen & toilet facilities. There's also a small wood-heated meeting room with 2 adjoining offices leading from the main reception and amenities block.

**OTHER FACILITIES:** The range of buildings connect to a versatile courtyard with garden surrounds & expansive native parklands. Activities can be organised on request, from ceramics classes to tours of the Bandicoot enclosure, veggie patches and indigenous food gardens.



**A:** 40 Chrome Rd, Bransholme VIC 3302  
**T:** 0419 185 923  
**E:** davidwyner@rocketmail.com



ROOM	SIZE (M²)	THEATRE	CLASS ROOM	BOARD ROOM	DINING	COCKTAIL	CATERING AVAILABLE	ACCOMM ON SITE	PARKING	DISABILITY ACCESS	EQUIPMENT AVAILABLE
Homestead	-	-	-	8	8	50	✓	✓	✓	✓	Limited garden furniture
Gardens	6000	-	-	-	80	100	-	✓	✓	✓	Limited garden furniture

## Arrandoovong Homestead

**HISTORY & LOCATION:** Arrandoovong, circa 1852, is recognised as one of the grandest double storey bluestone homesteads in the Western district. Situated in the village of Bransholme, 18 minutes south-west of Hamilton towards Budj Bim Cultural Landscape and Portland.

**VENUE DESCRIPTION:** The homestead boasts imposing formal gardens, sweeping lawns, ancient oak and cypress trees and a large carriage loop at the foot of the imposing entrance, perfect for photo opportunities. The property is entered through a .25 km tree lined driveway overshadowed by over 100 century old sugar gums, and lends itself to marquee events on the lawns surrounding the house. There are two large formal rooms with open fireplaces providing access to the wrap around front verandah - perfect for cocktail parties, small/medium sized weddings and functions, car rallies, garden parties, social club events, mature age birthdays and intimate meetings (up to 8 in formal dining room).

**OTHER FACILITIES:** A commercial kitchen is available for use by local caterers. Electricity, lighting and water access are available for all events.

On-site accommodation for 6 is available upon request. Tours to local attractions and wineries for up to 6 can be arranged using classic Mercedes cars garaged at the venue.





**A:** Kitchener St, Hamilton VIC 3300  
**T:** 03 5551 8343  
**E:** sally.kinghorn@wdhs.net  
**W:** www.wdhs.net



ROOM	SIZE (M <sup>2</sup> )	THEATRE	CLASS ROOM	BOARD ROOM	DINING	COCKTAIL	CATERING AVAILABLE	ACCOMM ON SITE	PARKING	DISABILITY ACCESS	EQUIPMENT AVAILABLE
Auditorium	130	106	-	-	-	-	✓	-	✓	✓	✓
Seminar Room 1	35	-	20	-	-	-	✓	-	✓	✓	✓
Seminar Room 2	35	-	20	-	-	-	✓	-	✓	✓	✓
Meeting Room	9.5	-	6	-	-	-	✓	-	✓	✓	✓
Boardroom	34	-	-	14	-	-	✓	-	✓	✓	✓
Foyer	40	-	-	-	-	-	✓	-	✓	✓	✓
Computer Room	-	-	6	-	-	-	✓	-	✓	✓	✓

## WDHS Education Centre

**LOCATION:** Adjoining the Hamilton Base Hospital, minutes from the CBD across from an established park.

**VENUE DESCRIPTION:** Our state-of-the art Centre offers a suite of venues catering for lectures, presentations, meetings, conferences and social events. We have a fully appointed 106 seat auditorium, two seminar rooms that can be used seperately or opened up to create one large space, a small meeting room and a foyer for registration, tea breaks and meals. Our corporate boardroom is purpose built, accommodating 14 people, and we have other spaces including a courtyard ideal for social functions. Local catering can be arranged on request.

**TECHNICAL FACILITIES:** Our auditorium has touch-screen technology which allows for the use of PCs, video conferencing, slide projectors, TV and radio. Presentations in the auditorium can be simultaneously viewed in both seminar rooms and recorded.

Our Boardroom has video conference facilities and a digital whiteboard, perfect for board meetings and discussion groups. Our computer training room is equipped with five PCs and is fully networked with data projector, whiteboard, printer and internet access.



**A:** 200 Ballarat Rd, Hamilton VIC 3300  
**T:** 03 5551 4144  
**E:** hamiltonreception@swtafe.vic.edu.au  
**W:** www.swtafe.edu.au/campuses/hamilton



ROOM	SIZE (M <sup>2</sup> )	CLASS ROOM	U-SHAPED	DINING	COCKTAIL	CATERING AVAILABLE	ACCOMM ON SITE	PARKING	DISABILITY ACCESS	EQUIPMENT AVAILABLE
Classrooms	72-76	30	18-20	-	-	-	-	✓	✓	✓
Videoconferencing Room	38	16	15-18	-	-	-	-	✓	✓	✓
Computer Laboratory	83	-	22	-	-	-	-	✓	✓	✓
Multipurpose Room	87	50-60	18-22	-	-	-	-	✓	✓	✓
Art Room	105	50-60	18-22	-	-	-	-	✓	✓	✓

## South West TAFE - Hamilton Campus

**LOCATION:** A tranquil setting 3.4 km from the CBD, easily accessible from the town centre with two accommodation outlets within walking distance.

**VENUE DESCRIPTION:** We not only offer nationally-accredited training with industry-standard equipment & facilities, but have multiple spaces suitable for conferences & events. The Multipurpose Room is ideal for presentations, meetings, small conferences & training, with adjoining kitchenette. Our largest space is the Art Room; a great space for creative groups & workshops, including easels and AV equipment. Break-out spaces include a student lounge with kitchenette, a computer laboratory with 17 PC stations, a videoconferencing room & multiple classrooms, the largest having 8 computers & access to 8 laptops.

**TECHNICAL FACILITIES:** Video conferencing facilities, projectors, whiteboards, Wi-Fi, TV, PCs/laptops with the latest hardware & software including online training capacity.

**OTHER FACILITIES:** Off-street parking with room for coaches, student library with print/online resources & plentiful desks. Catering utensils for 50 people & free tea/coffee facilities, or we can recommend several external caterers who service the campus. We can also organise short-course programs for groups, including first aid courses & safety compliance courses for the agricultural & construction industries.



**A:** 85 Mt Baimbridge Rd, Hamilton VIC 3300  
**T:** 03 5571 1708  
**E:** jodie.sanders@education.vic.gov.au  
**W:** www.hdsc.net.au



ROOM	SIZE (M <sup>2</sup> )	THEATRE	CLASS ROOM	BOARD ROOM	DINING	COCKTAIL	CATERING AVAILABLE	ACCOMM ON SITE	PARKING	DISABILITY ACCESS	EQUIPMENT AVAILABLE
Production Kitchen	26.5	-	10	-	-	-	✓	-	✓	✓	✓
Training Kitchen	65.3	-	16	-	-	-	✓	-	✓	✓	✓
Dining Room	68	30	30	20	45	50	✓	-	✓	✓	✓
Lecture Theatre	45.5	46	46	-	46	-	✓	-	✓	✓	✓
Media/Creative Industries	272	-	-	-	-	100	✓	-	✓	✓	✓
Media Classroom	84	25	25	25	-	-	✓	-	✓	-	✓
Small Meeting Room	21	-	8	10	-	-	✓	-	✓	✓	✓

## Hamilton District Skills Centre

**LOCATION:** Located beside Baimbridge College, 1km from the town centre. Easily accessible, ample car parking and a bus interchange.

**VENUE DESCRIPTION:** HDSC is a state-of-the-art training facility offering hospitality, automotive, carpentry, media, game design and hairdressing courses through VETIS programs. Multiple rooms are available for meetings, product launches, professional development days and information sessions. Spaces available for public hire include an intimate lecture theatre, multi-purpose dining room, media classroom, commercial training kitchen and smaller production kitchen with video training facilities, plus automotive & carpentry workshops and a hairdressing salon. All areas are fitted out with trade specific equipment with full and half-day hire rates available.

**TECHNICAL FACILITIES:** Most spaces have either a white board, projection screen or both, with laptop available. All spaces have individual heating and cooling.

**OTHER FACILITIES:** Basic tea and coffee facilities are all included with room hire. Espresso coffee can be supplied at an additional cost.



**A:** 127 Thompson St, Hamilton VIC 3300  
**T:** 0421 082 431  
**E:** theobsidianroom@gmail.com



ROOM	SIZE (sq m)	THEATRE	CLASS ROOM	BOARD ROOM	DINING	COCKTAIL	CATERING AVAILABLE	ACCOMM ON SITE	PARKING	DISABILITY ACCESS	EQUIPMENT AVAILABLE
Obsidian Room	279	-	-	60	40	150	✓	-	✓	✓	✓

## Obsidian Room

**LOCATION:** In the heart of Hamilton's CBD, this location is centrally located to all amenities and accommodation options. Street parking is available or there are large carparks suitable for coaches 50m away.

**VENUE DESCRIPTION:** A bar, function space and lounge, the Obsidian Room is a quirky space ideal for relaxed presentations, meetings and networking drinks.

Guests can enjoy premium wines including local Henty creations, a range of beers, spirits and delicious cocktails (including Espresso Martini on tap). Hot drinks, non-alcoholic drinks and bar snacks are also available from the large central bar.

Event organisers can hire the entire space, with its booths, couches, tables, chairs and bar stools, or partition off areas for private events. Musicians can make use of the resident piano or small stage, which also lends itself to speeches and presentations.

**TECHNICAL FACILITIES:** Free Wi-Fi connectivity plus large televisions which can be connected to laptops for presentations or video content.

**OTHER FACILITIES:** All levels of catering can be organised by the venue, from their usual Bar Snack menu to full external catering delivered to site. Group bookings outside of normal hours of operation are encouraged, and our team can organise a group activity for your event, from cocktail-making and wine tasting to trivia or indoor team building activities.





**A:** 142 Ballarat Rd, Hamilton VIC 3300  
**T:** 03 5572 5755  
**E:** info@thegrangeburn.com.au  
**W:** www.grangeburnmotel.com



ROOM	SIZE (M <sup>2</sup> )	THEATRE	CLASS ROOM	BOARD ROOM	DINING	COCKTAIL	CATERING AVAILABLE	ACCOMM ON SITE	PARKING	DISABILITY ACCESS	EQUIPMENT AVAILABLE
Function Room	200	120	60	60	100	140	✓	✓	✓	✓	✓
The Grange Restaurant	100	40	30	15	50	75	✓	✓	✓	✓	✓
The Grange Bar and Foyer	80	-	-	-	-	50	✓	✓	✓	✓	✓

## The Grange Burn Motel

**LOCATION:** Grange Burn Motel & Restaurant is located in Hamilton, directly accessed from the Glenelg Highway at the entrance to the city from Dunkeld and Ballarat. The Grange Burn is superbly positioned only 2km from the CBD, and provides ample free parking.

**VENUE DESCRIPTION:** The Grange Burn offers a 'one-stop shop' for accommodation, dining and conferencing needs in Hamilton. With 31 comfortable rooms, on-site dining and small to medium sized conference facilities you can leave your event in the capable hands of our professional and friendly staff while you get on with business. Our function room will accommodate up to 150 guests and is a favourite with corporate customers. The Grange Restaurant, with its garden outlook is a more intimate setting with idyllic views. Our Bar & Foyer area is ideal for drinks and networking, with log-fire and comfortable seating. From banquet-style dinners to on-the-go lunches, our executive chef and kitchen team are ready to cater to individual requirements and budgets. Work with our event coordinators to design the perfect menu to reward staff, treat suppliers or impress your guests. All 31 recently renovated rooms overlook the landscaped courtyard gardens.

**TECHNICAL FACILITIES:** Conferencing is made easy at The Grange Burn with all of the necessary facilities able to be provided. Projectors, whiteboards, flip-charts, sound systems and high-speed wireless internet are all part of the package offered to make your event run smoothly.



**A:** 106 Gray St, Hamilton VIC 3300  
**T:** 03 5571 9111  
**E:** bluemalt@bigpond.com



ROOM	SIZE (M <sup>2</sup> )	THEATRE	CLASS ROOM	BOARD ROOM	DINING	COCKTAIL	CATERING AVAILABLE	ACCOMM ON SITE	PARKING	DISABILITY ACCESS	EQUIPMENT AVAILABLE
Conference Centre	86.5	80	36	44	70	80	✓	-	✓	✓	✓

## Blue Malt

**LOCATION:** Blue Malt Restaurant & Bar is located in the main street of Hamilton. This locally-loved restaurant, café and bar boasts a private Function Room accessed through the main venue, or via a separate entrance off McLuckies Lane.

**VENUE DESCRIPTION:** Blue Malt offers a high quality 70 seat restaurant bar stocking 60 local, national and international beers, separate funtion room and corporate catering service which provides local produce and seasonal menus. The function room lends itself to business meetings, conferences, weddings or presentation dinners, or private dinners. Blue Malt's chefs can cater for any function - breakfast meetings, morning or afternoon tea, lunch, sit down meals or informal stand up functions. We can deliver business morning and afternoon teas and lunches to your door including (but not limited to) sandwiches, wraps, salads, hot and cold finger food platters and sweet platters. We can cater in our restaurant space, function room or at a venue of your choice.

**TECHNICAL FACILITIES:** Overhead data projector, fixed projector screen, TV, microphone and radio lapel microphone, laptop connection, Wi-Fi.

**OTHER FACILITIES:** Bar, whiteboard, flip chart, tables and chairs, remote controlled reverse-cycle air conditioning.



**A:** 110 Lonsdale St, Hamilton VIC 3300  
**T:** 03 5572 4055  
**E:** info@hamiltonlonsdalemotel.com.au  
**W:** www.hamiltonlonsdalemotel.com.au



ROOM	SIZE (M <sup>2</sup> )	THEATRE	CLASS ROOM	BOARD ROOM	DINING	COCKTAIL	CATERING AVAILABLE	ACCOMM ON SITE	PARKING	DISABILITY ACCESS	EQUIPMENT AVAILABLE
Merino Room	80	-	30	12	24	38	✓	✓	✓	✓	✓

## Hamilton Lonsdale Motel

**LOCATION:** The recently refurbished Hamilton Lonsdale Motel is centrally located in the Hamilton CBD within walking distance of eateries, shops and attractions. This accommodation and meeting space offers modern facilities and comforts in one convenient location.

**VENUE DESCRIPTION:** Intimate events are catered for in the Merino Room; a natural light filled multi-purpose space at the front of the property.

The Merino Room is ideal for small scale corporate seminars, meetings, training sessions, board meetings, lectures or small private networking breakfasts.

The room can seat up to 24 individuals for sit-down dining, and we can cater in accordance with your needs, including breakfast meetings, morning and afternoon teas, lunch, or standing functions serving informal finger food.

Your event will be managed with professional care and your specific needs met with an attention to detail your guests will surely appreciate.

**TECHNICAL FACILITIES:** Wall mounted 55 inch flatscreen TV, DVD player, flipchart, whiteboard, printing, scanning, photocopying, heating and cooling, high speed wireless internet.

**OTHER FACILITIES:** On-site accommodation for including a full cooked breakfast and complimentary high speed wireless internet access. Our 15 superior queen rooms are dressed with premium linen and boast split-system air conditioning, contemporary furniture, 42 inch flat screen TVs and well stocked minibars.



**A:** 134 Brown St, Hamilton VIC 3300  
**T:** 03 5571 1736  
**E:** reception@alexandrahouse.com.au  
**W:** www.alexandrahouse.com.au



ROOM	SIZE (M <sup>2</sup> )	THEATRE	CLASS ROOM	BOARD ROOM	DINING	COCKTAIL	CATERING AVAILABLE	ACCOMM ON SITE	PARKING	DISABILITY ACCESS	EQUIPMENT AVAILABLE
Bistro	160	-	-	-	120	250	✓	-	✓	✓	✓

## Alexandra House

**LOCATION:** Just 200 metres from the Hamilton Performing Arts Centre, one block from the Hamilton CBD. Ideally located in close proximity to a number of accommodation venues.

**VENUE DESCRIPTION:** Built in 1874 to accommodate the lady pupils of Alexandra College, Alexandra House is a beautiful historic building overlooking the heritage-listed grandstand of Melville Oval.

Now a multi-purpose accessible venue used as a bistro & function centre for events of all kinds, from board meetings & large group meals to conferences & weddings.

**CONFERENCE & DINING FACILITIES:** Our large bistro can seat 120 guests for a seated dining experience, or 250 cocktail style. This multi-purpose space can be portioned off to create private dining or function areas & to allow use of our technical facilities & separate bar. We offer complete catering packages from finger food to sit down meals, & can also cater for functions held offsite.

**TECHNICAL FACILITIES:** Two wall-mounted projector screens on either end of the bistro with data projector & AV equipment.

**OTHER FACILITIES:** In-house function manager available to assist event organisers. On-site bars offering a range of beverages including a selection of De Bortoli wines, plus tea/coffee. Kid's Corner to keep little ones entertained whilst the adults meet, converse & dine. Extensive car park with disabled car parking spaces & ample room for coaches.





**A:** 271 Pierrepoint Rd, Tarrington VIC 3300  
**T:** 0439 476 198  
**E:** events@pierrepointwines.com.au  
**W:** www.pierrepointwines.com.au



ROOM	SIZE (M <sup>2</sup> )	THEATRE	CLASS ROOM	BOARD ROOM	DINING	COCKTAIL	CATERING AVAILABLE	ACCOMM ON SITE	PARKING	DISABILITY ACCESS	EQUIPMENT AVAILABLE
Cellar Door	294	50	-	-	50	80	✓	✓	✓	✓	-
Outside	-	-	-	-	60	200	✓	✓	✓	✓	-

## Pierrepoint Wines

**LOCATION:** Pierrepoint Wines Vineyard and Cellar Door is located in Tarrington, 10 km south east of Hamilton, in the Henty Wine Region of Victoria.

**VENUE DESCRIPTION:** A unique function space is offered in the rustic converted farm shed which can comfortably seat 50 people. There's outdoor seating for approximately 60 people and ample space for a marquee for up to 200, attached or freestanding.

The cellar door can be used to host conferences, private functions, meetings, dinners or drinks and hors-d'oeuvres whilst enjoying the ambience of the vineyard and pastoral views.

On-site catering available specialising in grazing tables of fine local produce, though external caterers are welcome. Pierrepoint's cellar door has a full bar with a range of wines, beer, cider and soft drinks. Locally blended coffee, tea and locally made cakes are also available.

**ACCOMMODATION FACILITIES:** 2 self-contained private suites sleeping 5 people in total, situated at the rear of the Edwardian homestead just across the garden from the Cellar Door.

**OTHER FACILITIES:** Portable large screen TV with multiple connection options, Wi-Fi and heating and cooling systems in place.

Enjoy guided tastings, vineyard and property tours or simply relax in the sun and play our large range of lawn games.



**A:** 23 Martin St, Peshurst VIC 3289  
**T:** 03 5576 7233  
**E:** info@volcanoesdiscoverycentre.com.au  
**W:** www.volcanoesdiscoverycentre.com.au



ROOM	SIZE (M <sup>2</sup> )	THEATRE	CLASS ROOM	BOARD ROOM	DINING	COCKTAIL	CATERING AVAILABLE	ACCOMM ON SITE	PARKING	DISABILITY ACCESS	EQUIPMENT AVAILABLE
Volcanoes Discovery Centre	-	40	40	30	-	70	✓	-	✓	✓	✓

## Volcanoes Discovery Centre

**LOCATION:** Situated in the picturesque & delightful town of Peshurst, at the foot of the extinct Mount Rouse Volcano. Peshurst is located on the highway 30 minutes east of Hamilton & approximately 25 minutes south of Dunkeld.

**VENUE DESCRIPTION:** Extended from a heritage listed bluestone building, the Volcanoes Discovery Centre contains a welcome foyer, immersive exhibits, the Eccles Room function space & adjacent kitchen with equipment suitable for serving finger foods.

Our Eccles Room is equipped with fixed overhead projector & conference tables & chairs to accommodate 40 persons.

Learn how the surrounding volcanoes formed & shaped the landscape, watch videos of dramatic eruptions & even hold a volcanic bomb. A unique experience for any of your event attendees!

**TECHNICAL FACILITIES:** Overhead data projector, audio visual equipment, internet connectivity & whiteboard.

**OTHER FACILITIES:** Kitchen with microwave, fridge, oven, dishwasher, two sinks & tea/coffee facilities plus ample space for parking.

**TOURS:** Absorb the passion of our knowledgeable staff & volunteers on a guided tour of the Centre, or walk or drive to the summit of Mt Rouse for panoramic views of the lava plain.



**A:** 91 Skene St, Dunkeld VIC 3294  
**T:** 0400 152 545  
**E:** otdunkeld78@gmail.com  
**W:** creativespaces.net.au/space/off-the-rails-dunkeld



ROOM	SIZE (M <sup>2</sup> )	THEATRE	CLASS ROOM	BOARD ROOM	DINING	COCKTAIL	CATERING AVAILABLE	ACCOMM ON SITE	PARKING	DISABILITY ACCESS	EQUIPMENT AVAILABLE
Gallery	68	30	20	15	-	35	-	-	✓	✓	✓

## Off The Rails

**LOCATION:** Off The Rails is located in the charming village of Dunkeld, nestled at the base of the stunning Grampians National Park. The dramatic mountain views tower over the quaint mix of shops, cafés, restaurants, galleries and businesses which are all within walking distance from the venue.

**VENUE DESCRIPTION:** Off The Rails is a multi-purpose space created by converting the c1875 Dunkeld railway station into a fully accessible, contemporary and light-filled studio.

This newly renovated venue provides a quirky space for meetings, workshops or intimate concerts set amid one of Australia's most dramatic and picturesque landscapes.

Predominantly used as an artist's studio and inclusive community art space, the studio offers 13.6 x 5 metres of flexible, light-filled space with full heating and cooling and a small kitchenette.

There is also an undercover outdoor area overlooking the railway tracks with adjacent kitchenette, toilet and storage facilities.

Managed by a local group of artists, the studio is available for approved short-term rental. Application form, rates and useful attachments are available from our website.



**A:** 99 French Street, Hamilton  
**T:** 0421 380 442  
**E:** admin@thedistrictcollective.com.au



ROOM	SIZE (M <sup>2</sup> )	THEATRE	CLASS ROOM	BOARD ROOM	DINING	COCKTAIL	CATERING AVAILABLE	ACCOMM ON SITE	PARKING	DISABILITY ACCESS	EQUIPMENT AVAILABLE
Meeting Room	37	-	-	10	-	-	✓	-	✓	✓	✓

## The District Collective

**LOCATION:** Nestled in the corner of the CBD this location provides ample access to parking both on and off street within easy walking distance to the vibrant Gray St cafés.

**VENUE DESCRIPTION:** The District Collective brings together businesses and individuals wanting a workspace and meeting room from which to base or support their business or project. Alongside a reception/office and separate office room, our Boardroom can seat up to 10 for intimate meetings, and 3-4 hot desks are available for casual or semi-permanent use, with hourly or daily hire rates available.

Kitchen facilities include tea/coffee, water, lunch preparation area and fridge, and external catering can be organised from local suppliers.

We can assist start-up and fledgling businesses through the mentoring, collaboration and assistance of our full-time team members covering Information Technology Systems and Services, Accounting, Business Management and Engineering. From start-ups to regional office bases, we provide the space and infrastructure to support you.

**TECHNICAL FACILITIES:** Electronic whiteboard, TV (with external Chromecast), hi-speed Wi-Fi and printing available up to A3 plus heating/cooling.





**A:** 83-93 Shakespeare St, Hamilton VIC 3300  
**T:** 03 5551 4300  
**E:** events@sthgrampians.vic.gov.au  
**W:** www.hilac.com.au



ROOM	SIZE (M <sup>2</sup> )	THEATRE	CLASS ROOM	BOARD ROOM	DINING	COCKTAIL	CATERING AVAILABLE	ACCOMM ON SITE	PARKING	DISABILITY ACCESS	EQUIPMENT AVAILABLE
Total Centre	7350	-	-	-	-	-	✓	-	✓	✓	✓
Program Room	143	-	40	-	-	-	✓	-	✓	✓	✓
Table Tennis Room	648	-	240	-	-	-	✓	-	✓	✓	✓

## Hamilton Indoor Leisure and Aquatic Centre

**LOCATION:** Only a short distance from Hamilton's CBD, the Hamilton Indoor Leisure and Aquatic Centre is located at 83-93 Shakespeare Street, across from the showgrounds.

**VENUE DESCRIPTION:** Aside from excellent facilities for team-building activities, HILAC provides multiple spaces which can be hired for events. The Centre lends itself to sporting-related meetings, training days, award ceremonies and presentations.

Court 1 has fixed tired seating overlooking a 700m<sup>2</sup> space. Courts 2 and 3 adjoin into a 1230m<sup>2</sup> space and Court 4 provides an additional 800m<sup>2</sup> area ripe for activation. Other rooms available for hire include the table tennis room, multi-purpose program room with mirror wall, plus smaller spaces including creche and squash courts.

**TECHNICAL FACILITIES:** Public address system & Wi-Fi connectivity. Other audio-visual equipment available upon request.

**RECREATIONAL FACILITIES:** Heated 8 lane 25m pool, heated leisure pool with sloped beach entry, fully equipped gymnasium, 4 multi-purpose basketball courts, multi-purpose table tennis arena, 4 squash courts and adjoining outdoor velodrome.

**OTHER FACILITIES:** Café, car parking, accessible change rooms (hoist available), pool wheel chair & childcare facilities.



**A:** Market Pl, Hamilton VIC 3300  
**T:** 03 5573 0256  
**E:** events@sthgrampians.vic.gov.au  
**W:** www.southgrampians.vic.gov.au



ROOM	SIZE (M <sup>2</sup> )	THEATRE	CLASS ROOM	BOARD ROOM	DINING	COCKTAIL	CATERING AVAILABLE	ACCOMM ON SITE	PARKING	DISABILITY ACCESS	EQUIPMENT AVAILABLE
Grandstand	-	-	-	-	100	120	-	-	✓	✓	✓

## Melville Oval

**LOCATION:** In the heart of Hamilton's CBD on Lonsdale Street, close to shops, eateries and accommodation, directly opposite the Hamilton & Grampians Visitor Information Centre.

**VENUE DESCRIPTION:** Hamilton's central sporting precinct, containing a heritage listed Edwardian grandstand with tiered seating for taking in the action on the grassed oval, plus a function room with bar & kitchen facilities underneath. The precinct is fully enclosed & well secured for ticketed events, with a kiosk area, change facilities, and two lit netball courts plus adjoining concreted space, which lends itself to community events, performances and markets.

Oval lighting can be set to variable illuminations, ideal for concerts, pop-up events and sporting competitions.

View a virtual tour of Melville Oval & the CBD redevelopment on the Southern Grampians Shire Council's website. Works are due to be completed early 2023 including a brand new function centre adjoining the historical grandstand.

**TECHNICAL FACILITIES:** Basic conferencing equipment can be arranged on request through Southern Grampians Shire Council, including a portable projector screen, lectern, microphone and whiteboard.

**OTHER FACILITIES:** Grandstand & function area; change rooms; kiosk; AFL semi-professional lighting, car parking; ground seating; netball facilities with competition lighting.



**A:** 355 North Boundary Rd, Hamilton VIC 3300  
**T:** 03 5573 0256  
**E:** events@sthgrampians.vic.gov.au  
**W:** www.southgrampians.vic.gov.au



ROOM	SIZE (M <sup>2</sup> )	THEATRE	CLASS ROOM	BOARD ROOM	DINING	COCKTAIL	CATERING AVAILABLE	ACCOMM ON SITE	PARKING	DISABILITY ACCESS	EQUIPMENT AVAILABLE
Ansett Pavilion	-	-	-	70	40	70	-	-	✓	✓	✓
Multipurpose Room	80	80	-	-	-	100	-	-	✓	✓	✓
Bob Templeton Pavillion	-	-	40	-	-	80	-	-	✓	✓	✓

## Pedrina Park

**LOCATION:** In a leafy, quiet area on the outskirts of Hamilton, bordered by HIRL, Parklands Golf Club and the Parklands Reserve.

**VENUE DESCRIPTION:** Hamilton's largest Sporting Hub boasts facilities for most sports plus indoor venues suitable for meetings, social functions and team-building activities.

The largest indoor venue due for completion late 2021 is the new Inclusive Sports Pavillion, with a 80m<sup>2</sup> multi-purpose community room for groups up to 100, Ansett Pavilion meeting room, kitchen/kiosk, changing rooms and toilets.

This fully accessible venue will have access ramps and steps with handrails, balustrades and tactile indicators.

Meetings can also take place for up to 40 seated people in the Bob Templeton Pavilion, which has a kitchen, bar & changing rooms with glass doors opening out onto the sports pitches.

**TECHNICAL FACILITIES:** The Inclusive Sports Pavillion will have some technical facilities available with bookings, plus tables and chairs, a whiteboard and crockery/cutlery.

**OTHER FACILITIES:** Premier synthetic hockey pitch; six new Netball/tennis courts with player/coach shelters and stadium seating for spectators and a soccer pitch, all with competition lighting.

Three multisport ovals; turf cricket wicket; two synthetic cricket wickets; athletics facilities and playgrounds.



**A:** 21 Caldows Rd, Hamilton VIC 3300  
**T:** 0428 286 211  
**E:** admin@hamiltonharnessracing.com.au  
**W:** www.hamiltonharnessracing.com.au



ROOM	SIZE (M <sup>2</sup> )	THEATRE	CLASS ROOM	BOARD ROOM	DINING	COCKTAIL	CATERING AVAILABLE	ACCOMM ON SITE	PARKING	DISABILITY ACCESS	EQUIPMENT AVAILABLE
Function Room	200	-	-	-	150	150	-	-	✓	✓	✓
Social Room	80	-	-	-	50	60	-	-	✓	✓	✓
Bar	88	-	-	-	40	50	-	-	✓	✓	✓

## Hamilton Harness Racing Club

**LOCATION:** On an expansive 25ha block in a quiet location, 4.5km from Hamilton CBD en route to Dunkeld & Ballarat.

**VENUE DESCRIPTION:** A large, accessible complex comprising of flexible open spaces, undercover structures & lawns for marquees well suited to expos, markets, car rallies & indoor functions.

A 1500m<sup>2</sup> undercover outdoor area provides casual group dining space for up to 200 guests, bordered by various indoor rooms.

The largest indoor space is the Function Room, catering for groups of up to 100 with a snack bar ideal for serving takeaway food like warmed local pies plus teas & coffees.

A social room used for break-out sessions, meetings & refreshments has tea/coffee area & leads to a large bar, perfect for networking drinks.

The fenced 1km granitic sand Harness Racing track encircles a large lawned area ideal for expos & vehicle displays.

Events including animals can take advantage of secure fenced areas including 120 stalls & adjoining arena plus agistment paddocks.

**TECHNICAL FACILITIES:** A PA system allows for announcements to reach exterior & interior spaces. Other equipment available includes microphones, TVs, tables, chairs, & free Wi-Fi.

**OTHER FACILITIES:** The facility has plenty of parking space for coaches & other vehicles & is fully fenced, perfect for events requiring ticket checks or a single point of entry.





**A:** 3233 Cherrypool Rd, Rocklands VIC 3401  
**T:** 03 5388 2277  
**E:** info@grampiansresort.com.au  
**W:** www.grampiansresort.com.au



## Southern Grampians Wilderness Resort

**LOCATION:** A secluded bush sanctuary on the western side of the Grampians National Park, near the town of Balmoral.

**VENUE DESCRIPTION:** Surrounded by State forest, and with access to Rocklands Reservoir, this eco resort is perfect for memorable corporate retreats, team-building getaways or social functions. Our comfortable, wheelchair-accessible function and meeting spaces include a licensed restaurant/bar seating 65 guests, and an attached meeting/games room. We also have rustic outdoor settings under huge verandahs where your group can enjoy sunset drinks after table-tennis or toast marshmallows around the campfire. Spot emus, kangaroos, wallabies, echidnas, birdlife, orchids and wildflowers around our Eucalypt forests. Enjoy bushwalking, boating, fishing, mountain-biking, or discover nearby Aboriginal rock art, 4WD tracks, hiking trails or an 18-hole golf course.

**TECHNICAL FACILITIES:** TV & CD/DVD facilities with surround sound.

**OTHER FACILITIES:** On-site catering can be arranged by our resident Chef by arrangement. Memorable on-site accommodation options include 2 Loft-style Log Cottages (each with 2 bedrooms, sleeping 8) and 3 single storey log cottages (each with 2 bedrooms, sleeping 6). The cottages have spa baths for evening relaxation, the Lofts boast full kitchens, and both have large timber verandahs, with all linen, towels and crockery provided.

ROOM	SIZE (M <sup>2</sup> )	THEATRE	CLASS ROOM	BOARD ROOM	DINING	COCKTAIL	CATERING AVAILABLE	ACCOMM ON SITE	PARKING	DISABILITY ACCESS	EQUIPMENT AVAILABLE
Function Room/Bar	-	65	50	-	65	80	✓	✓	✓	✓	✓
Meeting/Games Room	-	45	40	-	45	60	✓	✓	✓	✓	✓



## Other Venue Options

This Planners Guide is designed to connect you with our team for 1:1 support to meet your event needs.

The venues featured are only a fraction of the spaces available to you, since our local businesses are continually repositioning themselves to provide solutions to meet the needs of hirers.

We can provide you with the latest information on **152** spaces you can activate for a memorable meeting or function, be it:

- A café who host private groups outside of normal service hours
- A vineyard able to host a marquee for a pop-up event space
- A bar you can book for private networking drinks
- One of 39 community halls and historic buildings, including old courtrooms and mechanics institutes.
- One of 22 recreation reserve club rooms adjoining outdoor sporting facilities ideal for team-building activities
- One of 17 schools and colleges with classrooms for break-outs
- One of 11 atmospheric churches with incredible acoustics for immersive performances

*Or something a little different...*

*Whether you want to activate a laneway, park, oval, paddock, car park or an entire street, we can help!*

### CONTACT US

☎ 03 5573 0239  
✉ events@sthgrampians.vic.gov.au

our welcoming

# ACCOMMODATION



Our accommodation industry isn't dominated by large chains with cookie-cutter rooms – here you'll find memorable offerings with warm welcomes in close proximity to our main venues and attractions, or nestled in our restorative natural landscapes, perfect for restful retreats.

Our Visitor Experience Team can help you and your guests find the right room for your needs, be it a central hotel, a luxury farmstay, eco-lodge or even boarding rooms.

With our free one-on-one referral service, you can utilise our freecall number and email address for visiting delegates and receive one-on-one assistance to find an available room at the right price point.

Here's a list of our 17 largest accommodation options ordered from largest capacity to smallest based on number of separate rooms per property.

We've also collated our best options for group accommodation using shared facilities.

This list is by no means exhaustive- we have 900 beds available in the Southern Grampians offered by 66 accommodation operators (not including AirBnB etc).

Many of our accommodation options are in close proximity, perfect for those on foot or easy bus pick ups.

LOCATION	NAME	ROOMS
Dunkeld	Royal Mail Hotel (Total)	52
	Hotel (Sleeps 75)	25
	Mt Sturgeon Cottages (Sleeps 20)	10
	Studio Rooms	7
	Mt Sturgeon Homestead (Sleeps 12)	6
	Mulberry House (Sleeps 11)	4
Hamilton	Comfort Inn Botanical	33
Hamilton	Grange Burn Motel	31
Hamilton	Bandicoot Motor Inn	26
Hamilton	Lake Hamilton Motor Village & Caravan Park (Sleeps 117)	25
Hamilton	AAAt 28 Goldsmith Motel	15
Hamilton	Hamilton Lonsdale Motel	15
Hamilton	Caledonian Hotel/Motel	14
Hamilton	Hamilton Lakeside Motel	14
Hamilton	Budget On The Lake	12
Hamilton	Hamilton Caravan Park (Sleeps 69)	17
Hamilton	Hamilton Townhouse Motel	10
Dunkeld	Southern Grampians Cottages (Sleeps 34)	9

## GROUP ACCOMMODATION

LOCATION	NAME	ROOMS	SLEEPS
Hamilton	Hamilton & Alexandra College Boarding Houses	82	150
Hamilton	Monivae College Boarding Houses	46	100
Dunkeld	Grampians Retreat	14	86
Rocklands	Rocklands Lodge	12	52
Rocklands	Southern Grampians Wilderness Resort	5	36

We know the locals to call to check availability and can advise on their locations and amenities. Connect with our team to discuss the best options to share with your event attendees, and browse our website for individual listings.

[visitgreaterhamilton.com.au/accommodation](http://visitgreaterhamilton.com.au/accommodation)

66  
registered  
accommodation  
providers

900  
beds sleeping

1200  
guests

TOP

Mountain View Rooms  
at the Royal Mail Hotel



activities and attractions

# INSPIRED BY LOCALS



tours, museums and guided experiences

Our passionate locals can take you on guided tours of our region's key attractions, allowing you behind-the-scenes, under the skin & into the heart of our landscapes, with bespoke experiences specially designed for groups.

Travel, transport & tales combine at visits to the **Ansett Transport Museum**, with its aircraft, aviation memorabilia & uniform displays housed in the company's first aircraft hanger, & the **Campes Motor Museum**, where over 80 vintage, veteran & classic cars, trucks & motorbikes are yours to explore. Delve into our region's fascinating past on a tour of the **Hamilton Pastoral Museum**, where your group can explore period replica buildings, lost trades, historic farming practices & machinery. Organise a guided walking tour of Hamilton's historical buildings, homesteads or cemeteries by an informed local from the **Hamilton History Centre**, or connect with intriguing local stories at the **Dunkeld Historical Museum**.

At the base of one of Australia's youngest volcanoes, **The Volcanoes Discovery Centre** unearths the geology, history & cultural significance of our basalt plains, waterfalls & lava caves. Walk up Mt Rouse & the old quarry with a tour guide to see lava flows & layers.

Follow the lava flow south to Mt Napier & on to the **Budj Bim National Heritage Landscape**, to experience the history of the Gunditjmara people on a guided tour of this fascinating landscape before a bush tucker lunch, or connect with local Gunditjmara-Boandik Elder, Uncle Johnny Lovett on a tag-along tour of culturally significant sites in the region.

Discover indigenous food gardens, veggie patches & native flora & fauna on the nature trail around **HIRL**, or spot endangered Eastern Barred Bandicoots on a torch-lit tour. Connect with experts from the **Nature Glenelg Trust** for guided tours of local wetlands & waterways, or unearth the flavours and value of wattle on an orchard tour with **Wattle Seeds Australia** in Tarrington.

Meet intrepid adventure at **Grampians Nature Programs**. In forest surrounded by the Grampians, experience wilderness adventures or group animal tracking, edible weed foraging & collaborative art.

## HISTORY & HERITAGE

Sir Reginald Ansett Transport Museum  
03 5571 2767  
Corner Ballarat Rd & Riley St, Hamilton  
info@ansettmuseum.com.au

Campe's Motor Museum  
0419 168 400  
226 Coleraine Rd, Hamilton  
campescoacheshamilton@bigpond.com

Volcanoes Discovery Centre  
0402 083 782  
23 Martin St, Peshurst  
info@volcanoesdiscoverycentre.com.au

Hamilton Pastoral Museum  
0409 926 095  
Hiller Ln, Hamilton  
hamiltonpastoralmuseum@live.com

Dunkeld Historical Museum  
03 5574 9236  
Cnr Wills & Templeton St, Dunkeld  
bullawynpastoral@bigpond.com

Hamilton History Centre  
03 5572 4933  
43 Gray St, Hamilton  
hamiltonhistory@ansonic.com.au

## INDIGENOUS EXPERIENCES

Eagle Aboriginal Tours  
Johnny Lovett  
0497 813 714

Budj Bim Tours  
0458 999 315  
4/48 Edgar St, Heywood  
budjbim@windamara.com

## WILDERNESS, WILDLIFE & NATURE

Native Wildlife Feeding Tours  
03 5577 2241  
Royal Mail Hotel, Parker St Dunkeld  
relax@royalmailhotel.com.au

Hamilton Institute of Rural Learning Tour  
03 5572 3699  
333 North Boundary Rd, Hamilton  
info@hirl.org.au

Nature Glenelg Trust  
08 8797 8181  
info@natureglenelg.org.au

Wattle Seeds Australia  
0437 723 470  
peter@wattleseeds.com.au

Grampians Nature Programs  
140 Carlsens Rd Cavendish 3314  
suzanmuir@gmail.com

**TOP RIGHT**  
Botanicals workshops with  
Grampians Nature Programs

**TOP LEFT**  
Campe's Motor  
Museum, Hamilton

**BOTTOM**  
Native Wildlife Feeding Tours,  
Rufous Bettong





## art & creativity

Hamilton is awash with large scale murals, intriguing sculptures and quirky creative corners ripe for discovery on foot, but our region also boasts many galleries your group can visit, and an array of talented local creatives to connect with.

One of regional Australia's best galleries, the **Hamilton Gallery** offers groups outstanding experiences as a venue or activity. Enjoy a 1-hour guided tour of the most fascinating pieces from the 9000+ piece collection, through exhibitions, or arrange a bespoke talk, film or class.

Throughout the region you can meet the makers themselves on visits to unique galleries and studios, or get hands-on in a group workshop.

Be inspired by the landscaped gardens, orchards & animals in a painting class at **Petschel House** studios & gallery. Group painting, floral arranging or wreath-making classes occur at sustainable flower farm; **Willow Violet & Flora**, or your group can learn floral artistry with **Gray St Flowers**.

Small groups can get hands-on with pottery classes at **HIRL's Pottery Studio** or **Hope & Co.** and have it mailed post-event. Try jewellery-making with **Grampians Red Door Studio** or craft something handmade with **Bespoke Design Co.** or **My Crafternoons**.

Arrange demonstrations & workshops in wool spinning, dyeing, weaving & knitting through the **Wool & Craft Guild**, or capture the Southern Grampians in a photography tour or hands-on workshop with **Gill Fry Photography**.

The options are as limitless as your creativity!

### GALLERIES

Hamilton Gallery  
03 5573 0460  
info@hamiltongallery.org

Petschel House  
0417 585 102  
jenni@jennimitchell.com.au

Mud Gallery Hamilton  
03 5572 3699  
com@mudgallery.com.au

Elizabeth Arthur Fine Art Gallery & Sculpture Garden  
03 5572 2851  
elarthur@bigpond.net.au

Garage Gallery Dunkeld  
0418 166 513  
onlyewe@westnet.com.au

Waiting Room Art Gallery Dunkeld  
0437 944 582  
aefleming@bigpond.com

Ros McArthur Art Studio  
0437 944 582  
ros@grampiansart.com.au

Gerard Murphy Furniture Dunkeld  
0438 322 411  
gmfurniture@outlook.com

Lauriston Press Peshurst  
0423 630 783  
gallery@lauristonpress.com.au

### WORKSHOPS

Willow Violet & Flora  
0438 305 658  
lisaaddinsall@hotmail.com

Gray St Flowers  
03 5572 2000  
linda@graystflowers.com.au

HIRL Pottery Studio  
0458 747 015  
jlove\_218@live.com

Hope & Co.  
0402 431 331  
hello@hopeandco.com.au

Grampians Red Door Jewellery Studio  
0432 550 436  
grampiansreddoorstudio@gmail.com

Bespoke Design Co.  
0427 519 969  
www.bespokedesignco.com.au

My Crafternoons  
0411 845 831  
mycrafternoons@gmail.com

Wool & Craft Guild  
0427 724 848  
hamiltonwoolandcraft@gmail.com

Gill Fry Night Photography Workshops  
0427 734 539  
gill@gillfryphotography.com.au

## culinary experiences

Western Victoria's rich volcanic soil is responsible for the quality of much of our food and fibre. Visit a producer on-site or take part in a group cookery class at a multi-station kitchen. Whether your group pick, taste, brew or bake, there are memorable moments to be created and savoured.

Take your group on a tour of the largest restaurant kitchen garden in Australia (1.2 hectares with Grampians views) on Royal Mail Hotel Kitchen Garden Tour.

Feast on the produce you've seen picked at the 2-chef-hatted fine-dining restaurant; **Wickens**, or at casual eatery; **Parker Street Project**.

Other primary producers who can offer tours & take-home produce include **Glenelg River Herbs**, the largest grower of fresh Rosemary in the Southern Hemisphere, and **Grampians Food Co.**, a sustainable vegetable farm in Dunkeld. We can also connect you with local sheep producers & arrange farm visits to working woolsheds & grazing properties to learn first-hand what makes Western District lamb, and our fine Merino wool, so renowned.

Meet the makers and taste fine confectionary at **Glenelg Fine Chocolates** in Coleraine, or learn everything from roasting to latte art at **Rox Coffee** before enjoying a cup on-site in the café.

For hands-on learning, take part in a group sourdough making-class with **Wannon Sourdough**, or learn the art of preserving & jam-making with **Homestead Enterprises**.

Royal Mail Hotel - Kitchen Garden Tour  
03 5577 2241  
relax@royalmailhotel.com.au

Glenelg Fine Chocolates  
03 5575 2598  
erika@glenelgfinechocolates.com.au

Wannon Sourdough  
0407 098 015  
wannon@westnet.com.au

Homestead Enterprises  
0451 031 300  
homestead1768@gmail.com

Rox Coffee  
03 5572 4857  
info@roxcoffee.com.au

Grampians Food Co.  
0458 024 924  
grampiansfoodco@gmail.com

Glenelg River Herbs  
03 5570 1190  
office@glenelgriverherbs.com.au

TOP  
Roasting coffee beans at Rox Coffee

BOTTOM

A tour of the Royal Mail Hotel Kitchen Garden



## wine experiences



The Southern Grampians sits at the top of the Henty Wine Region, a stones-throw from the historic wineries of the Grampians, only 90 minutes from the Coonawarra vigneron in South Australia.

Taste cool-climate reds & talk tannins with our passionate Henty wine-makers at cellar doors. Visit Tarrington's **Pierrepont Wines** to enjoy a cheese platter & giant garden games, or Hochkirch Wines to learn about biodynamic viticulture. Stop by Café Catalpa to enjoy a **Henty Estate Wine**, or take your group to the quaint **Bochara Wines** near the Wannon & Nigretta Falls, or Dunkeld's newest **Herrmann Wines**.

A guided tasting experience is also offered to small groups at the award-winning **Royal Mail Cellar Door**, which houses the largest collection of Burgundy and Bordeaux in the Southern Hemisphere.

There are wonderful wineries in neighbouring regions too.

**Suffoir Winery, Brewery & Cellar Door** in nearby Macarthur offers a range of beers, cider, gins & brandy.

North of Dunkeld you can tour the underground droves at **Seppelt**, the 1866 cellars at **Best's Great Western**, or visit other wineries, breweries and cellar doors as you make more delicious discoveries, like the oldest olive groves in Victoria.

Here are some of our favourite wine stops your group can visit en route to or as part of your itinerary - cheers!



### RIGHT

Group guided wine tastings are offered by many of our cellar doors



VISITING  
PIERREPONT WINES?  
MAKE SURE YOU  
VISIT PIERREPONT  
PROTEAS NEXT  
DOOR!

### ICON LEGEND



Vineyard



Cellar Door

### LOCAL HENTY WINERIES

Pierrepont Wines  
0439 476 198  
info@pierrepontwines.com.au



Bochara Wines  
0401 220 943  
info@bocharawines.com.au



Herrmann Wines  
03 5571 1911  
herrmannwines@optusnet.com.au



Hochkirch Wines  
03 5572 3266  
hochkirchwines@bigpond.com



Henty Estate Wines  
03 5572 3266  
wine@henty-estate.com.au



Mt Napier Wines  
03 5571 9850  
joconnor66@hotmail.com



Royal Mail Hotel Wine Cellar  
03 5577 2241  
relax@royalmailhotel.com.au



### BROADER HENTY REGION

Suffoir Winery & Brewery



Wando Lodge



Basalt Vineyard



Crawford River Wines



Nappa Merri



### GRAMPIANS REGION

Best's Wines



Seppelt Winery



Mount Langi Ghiran



Pomonal Estate



Fallen Giants Vineyard



### PYRENEES REGION

Blue Pyrenees Estate



Mount Avoca Winery



Kara Kara Estate Winery



DogRock Winery



Taltarni Vineyards



### COONAWARRA REGION

Balnaves of Coonawarra



Wynns Coonawarra Estate



Majella Wines Coonawarra



Katnook Estate



DiGiorgio Family Wines



TOP RIGHT  
Pierrepont Wines

TOP LEFT  
Group tutorial at the Royal  
Mail Hotel Wine Cellar



## explore outdoors:

# NATURE BASED ACTIVITIES

From our awe-inspiring waterfalls to the 400 million year old landscapes of the Grampians National Park (Gariwerd), there are incredible natural wonders here that will form memorable parts of your group's itinerary.

Delegates wanting to start the day in the best possible way can take in a dawn hike to watch the sunrise from their chosen summit. Here we've curated our favourite well-marked trails, which make up parts of the new International-standard 160km Grampians Peaks Trail. Licensed tour operators offering guided walks can be arranged through the **Royal Mail Hotel**, or our team can arm your delegates with maps of the best scenic look-outs & self-drive routes, including where to find Aboriginal Rock Art sites.

Popular lookouts include the epic views from Victoria Valley or the Grampians Tourist Road leading to Boroka Lookout, Reed Lookout, Mackenzie Falls and the Wonderland walks around Halls Gap.

15 minutes from Hamilton you'll find cascades of water that make an incredible group photo backdrop too.

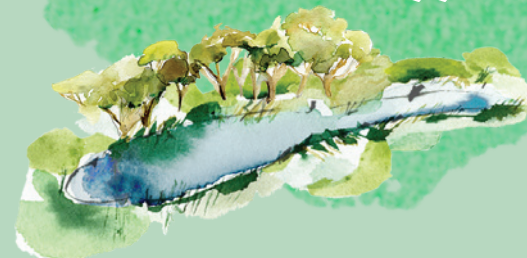
Wannon and Nigretta Falls are only 8 minutes apart, and give insights into the lava flows that carved the Newer Volcanic Province (Kanawinka Geotrail).



### OUR PICKS

Here we've curated our picks of the best natural attractions ripe for group exploration - you can discover more at our regional tourism website

[visitgreaterhamilton.com.au](http://visitgreaterhamilton.com.au)



### OUR FAVOURITE WALKS

#### MT STURGEON (WURAGARRI) & MT ABRUPT (MUD-DADJUG)

Both hard grade 3-3.5 hour return hikes from Dunkeld, with spectacular rewarding views

#### MT PICCANINNY (BAINGGUG)

Easy 1 hour return bushwalk close to Dunkeld with instagrammable views of the Grampians Peaks.

#### SIGNAL PEAK

Hard grade 3.5 hr return hike from the Mt Abrupt carpark with new sandstone staircase.

#### CHIMNEY POTS

Hard grade 5km loop to striking sandstone formations. 3 hours return, 30 mins drive from Cavendish.



**WHATEVER YOUR GROUP EMBARK ON IN THE GREAT OUTDOORS, THEY ARE SURE TO LEAVE FEELING REFRESHED, REJUVENATED AND READY TO GET BACK TO BUSINESS.**



#### TOP

Epic Wannon Falls from the accessible viewing deck

#### RIGHT

Sunrise views from the Piccaninny walk with Mt Abrupt in the background

### WATERFALLS

#### Wannon Falls

Snap a group selfie at the accessible viewing platform for this 30m vertical precipice of hardened basalt lava, over which water cascades into a deep plunge pool.

#### Nigretta Falls

Take your group to marvel at this red-hued volcanic rock cascade from the viewing platform, or descend the jarrah timber stairway to the base for an up-close experience.

### LAKES, RIVERS & RESERVOIRS

#### Lake Hamilton

Arrange group fishing, stand-up paddle boarding, waterskiing or rowing, or stroll the lakes edge on a 45 min lap.

#### Rocklands Reservoir

Fossick around Victoria's 3rd largest inland waterway near Balmoral, with views of the Grampians and Black Range State Park.

### GARDENS

#### Dunkeld Arboretum

Refresh your group amidst 7,000 trees in this scenic water reserve, including the Nation's 2nd largest collection of oaks, sawmill, carved sculptures and mosaic labyrinth.

#### Peter Francis Points Arboretum

Venture through this arboretum nestled in the hills outside Coleraine, featuring one of the world's oldest and most diverse planted collections of Australian native trees.

#### Penshurst Botanic Gardens

Tour the 13-acre Wetlands Gardens with its never-failing spring, soothing lake, gazebo and impressive swamp cypress canopy over the footbridge.

#### Hamilton Botanic Gardens

Tour Victoria's 3rd oldest Botanic Gardens with its quaint rotunda, new bird aviary, magnificent fountains, bridges and sweeping oak walk.

### PARKS, MOUNTAINS & WALKS

#### Grampians National Park (Gariwerd)

World-class hikes, mountain views, aboriginal rock art, flora and fauna... Whether on a guided hike, discovering aboriginal rock art solo, taking a scenic drive or hitting the best lookouts, this is unmissable.

#### Mt Napier State Park

Dormant volcano offering sweeping views of the broader volcanic landscape, including the Byaduk Caves and the Tumuli (Lava Blisters).

#### Mount Rouse / Kanawinka Geotrail

Summit one of Australia's youngest extinct volcanoes and take in panoramic views of our most extensive volcanic province after visiting the Volcanoes Discovery Centre.

#### Black Range State Park

#### Settlers Walk along the Wannon River

#### TOP

Thundering cascades at Nigretta Falls

#### LEFT

Historic rotunda at the Hamilton Botanic Gardens





## sport & teambuilding

Fancy hoisting your manager up 30 metres & watching them plunge through the air on a Giant Swing?

**Grampians Retreat** can offer teambuilding activities like this for all group sizes (and nerves), or get your guests bonding with competitive sport.

There's nothing like sport to get your guests bonding (or to unleash their competitive side).

We have excellent indoor and outdoor facilities for **team sports**, from archery and karate and to indoor rock-climbing, clay target shooting or group dance classes.

We can find you the right locals to organise activities for groups large & small.

Contact us to connect with opportunities for:

Archery | Athletics | Badminton  
Basketball | Cricket | Croquet | Dance  
Darts | Fishing | Football | Golf |  
Gymnastics | Hockey | Horse Riding  
Lawn Bowls | Martial Arts | Netball  
Rowing | Soccer | Squash | Swimming  
Table Tennis | Tennis

### TOP

Unite your team playing sport in one of the world's most picturesque locations, Dunkeld

### RIGHT

Giant swing at Grampians Retreat, Dunkeld

Grampians Retreat Teambuilding  
03 5577 2252  
info@grampiansretreat.com.au

Archery, low ropes, orienteering, tug-of-war, mountain biking, campfire singalongs, indigenous story time creative activities and more in the heart of the Grampians National Park.

Hamilton Indoor Leisure & Aquatic Centre  
03 5551 4300  
enquiries@hilac.com.au

Take over the large table tennis room for a group tournament or challenge yourselves to all-abilities wheelchair basketball. There's also a velodrome, pools, squash courts and gym plus program room ideal for group classes.

Hamilton Croquet Club  
03 5572 1878  
hamiltonviccc@gmail.com

Enjoy a refined afternoon of croquet guided by the Hamilton Croquet Club, paired with refreshing drinks on their luscious green courts.

Palace Martial Arts  
0400 402 346  
palace.ma@yahoo.com.au

Have your group develop a black belt attitude in high energy, motivating classes from 45mins to 2hrs and beyond in Hamilton's martial arts studio.

### Golf

From a guided lesson at the Hamilton Golf Club, to a quick round robin competition at Parklands, or golf in the Gums at Mooralla or Grampians Golf Clubs, our region's 6 golf courses provide a refreshing team activity for your group.

### Lawn Bowls

Your guests will love social bowls and beers on the well-maintained greens at Hamilton Bowling Club, Grangeburn Bowling Club, or at charming greens in our surrounding towns.

## wellness

Visiting the Southern Grampians is enriching for the mind, body & soul. Encourage your delegates to focus, relax & rejuvenate with guided classes on site or at your event. We have skilled local practitioners offering group classes in yoga, pilates, mediation, mindfulness, sound therapy, drumming & more.

Griffins Hill Yoga Retreat  
0425 768 039  
info@griffinshill.com.au

Take in the awe-inspiring Grampians views in a group class at Griffins Hill Yoga Retreat, or have Senior Iyengar instructor Frank Jesse visit your event location for a rejuvenating class on-site.

Tarrington Wellbeing Centre  
0419 354 263  
wellbeing3301@outlook.com

Join Deb at their wellbeing centre close to Hamilton for yoga, pilates & guided mindfulness classes, or invite Deb to run a group session on location.

On Track Pilates & Fitness Studio  
0401 572 018  
ontrackpilates@gmail.com

Enjoy a group fitness session at Hamilton's newest pilates studio. Challenge your core and strengthen your pelvic floor by taking on the reformer machines, or let Mardi take you through a more conventional group training session.

Sonic Harmony  
0409 350 573  
info@sonicharmony.com.au

Meditational group sound therapy & workshops using the vibrations & frequencies of Drum, Himalayan/Tibetan & Crystal Singing Bowls, Voice & Therapeutic Percussion.

Ashram Sanctuary  
0421 475 630  
ashramsanctuary@gmail.com

An animal shelter offering cow-cuddling therapy, yoga & dhyana (meditation), plus flowers, fruits, vegetables & live edge furniture in a verdant & virgin forest near Hamilton.

Kailash Collective  
0415 703 324  
info@kailash.co

A sacred space, retreat centre & group lodging on the Western side of the Grampians, who can set up a bell tent on location & offer yoga, meditation, Yagya (fire ceremony), discourse & facilitation workshops for your group

## WHAT'S ON

Time your event to take advantage of our calendar of events, from shows and race days to local markets.

Discover what's on at [visitgreaterhamilton.com.au/whats-on](http://visitgreaterhamilton.com.au/whats-on)

You can also book groups for guided tours or exhibition openings at the Hamilton Gallery, performances at the Hamilton Performing Arts Centre, & screenings at the Hamilton Cinema - private experiences are also possible at each of these venues.

### Hamilton Gallery

03 5573 0460  
107 Brown St, Hamilton

### HPAC

03 5573 0429  
113 Brown St, Hamilton

### Hamilton Cinema

03 5573 0472  
111 Brown St, Hamilton



# SUPPLIERS

Here we have curated a selection of local contacts you need for those vital parts of your event; the food & beverages, event atmosphere & equipment, and all-important logistics.

From caterers to hire companies, transport providers to videographers, our region is teeming with talented locals ready to provide you with the service you need. We can also connect you with businesses in the South West offering tech support, generators, lighting hire, marquees, even live musical entertainment. Just ask!

## catering

Get a real taste for the Southern Grampians by taking advantage of our incredible local caterers. Our masterly chefs can deliver everything from banquet meals using seasonal local produce, to portable lunch packs, roving finger food & bespoke biscuits, cakes & slices.

We have local caterers offering grazing tables & picnic hampers, plus talented local bakers who can create bespoke biscuits, cakes & slices.

From coffee vans to food trucks, our region has a host of mobile food vendors ready to service your event on-site too. Your itinerary will be memorable with refreshments on-the-go, be it wood-fired pizzas by a waterfall, coffee on arrival at the base of the Southern Grampians, or an ice-cream van for your post-event dessert!

### EVENT CATERERS

Alexandra House  
03 5571 1736  
admin@alexandrahouse.com.au

Blue Malt  
03 5572 5417  
ashlea.yole@yoleenterprises.com.au

Café Gray  
03 5571 9209  
hello@cafegray.com.au

Candied Lime Catering  
0408 775 311  
georgie@candiedlime.com.au

Dunkeld Old Bakery  
03 5577 2663  
info@dunkeldbakery.com.au

Gildo's Catering Company  
0434 766 237  
andrew@gildos.com.au

Izzy's Catering  
03 5577 2256  
izzyshospitality@gmail.com

Jack + Jude  
03 4502 4730  
fushy@jackandjude.com.au

Lemon Myrtle  
03 5572 2786  
info@lemonmyrtle.cafe

Little Koi  
03 5572 3225  
littlekoicafe@gmail.com

Roxburgh House  
03 5572 4857  
info@theroxburgh.com.au

Tosca Browns  
0423 712 911  
toscabrownsbookings@gmail.com

Sturgeon View  
03 5577 2288  
cafe109dunkeld@hotmail.com

Woody's Café  
03 4502 4788  
woodyscafebar@gmail.com

something a  
little different...



### PLATTERS & HAMPERS

Hamilton Hamper  
03 5571 2088  
bridget@hamiltonhampers.com.au

Simson & Co Grazing Tables  
0427 767 443  
simsonandco@outlook.com.au

### FOOD TRUCKS, COFFEE VANS & MOBILE BARS

Elsie Baravan  
0448 096 329  
elsie.baravan@gmail.com

Hamilton Sweet Tooth Ice Cream Van  
0417 538 111  
lisa@sweettoothhamilton.com.au

Java Jive Coffee Van  
0411 030 911  
javajivemobile@gmail.com

Proove Pizza  
03 5572 2786  
hello@proove.pizza

Rox Coffee  
03 5572 4857  
info@theroxburgh.com.au

Sis & Bully's  
0438 545 899  
sisandbullys@gmail.com

Spicy Kerala Indian Food Truck  
0469 715 085  
eldo9@yahoo.com

### CAKES & BAKES

chrissy.made  
0417 842 703  
chrissymade@hotmail.com

Prettyfull Pantry  
0438 088 372  
sarah@prettyfullpantry.com.au

TOP  
Local caterers and wineries  
make a perfect pairing

BOTTOM  
Elsie Baravan





# cultural services

We encourage events in our region to incorporate welcoming protocols and Traditional Owner acknowledgements into your events, as well as visiting some of our region's fascinating cultural sites as part of your itinerary.

View the map at [aboriginalheritagecouncil.vic.gov.au](http://aboriginalheritagecouncil.vic.gov.au) to find the Registered Aboriginal Parties relevant to your event locations, to check who to recognise in your Acknowledgement of Country, and to connect with relevant locals for event involvement and tours.

Registered Aboriginal Parties for the Southern Grampians include **Eastern Maar Aboriginal Corporation** and **Gunditj Mirring Traditional Owners Aboriginal Corporation**.

You can connect directly with local Gunditjmarara/Boandik Elder, **Uncle Johnny Lovett**, to organise a Welcome to Country, or to arrange group tours to local sites of cultural significance.

You can also arrange a traditional Aboriginal dance by Gunditjmarara youths from **Koondoom Yarkeen Karweeyn**

Gunditjmarara/Boandik Elder  
Uncle Johnny Lovett  
0497 813 714

Koondoom Yarkeen Karweeyn  
0487 099 268  
[koondoomyarkeen@gmail.com](mailto:koondoomyarkeen@gmail.com)

Eastern Maar Aboriginal Corporation  
0429 566 659  
[admin@easternmaar.com.au](mailto:admin@easternmaar.com.au)

Gunditj Mirring Aboriginal Corporation  
03 5527 1427  
[reception@gunditjmirring.com](mailto:reception@gunditjmirring.com)



# transport



Getting your delegates from A to B is made easy with local transport companies, from luxury air-conditioned coaches to nimble minibuses and cars. Guests can also arrive in style on a charter flight, take in aerial views in a helicopter or convoy in classic cars as part of a memorable itinerary!

## CARS, COACHES & MINIBUSES

Trotters Coaches  
03 5572 3123

Luke's Party Hire - Minibus  
0418 583 937

Avis  
03 5571 1911

Atkins Autoworks  
03 5572 3266

## CHARTER FLIGHTS & SCENIC AIR TRAVEL

Sharp Airlines  
1300 55 66 94

Southern Airlines  
03 8586 7420

Sagun Helicopters  
0407 559 668

Grampians Helicopters  
0438 981 438

## TAXIS & PUBLIC TRANSPORT

Taxis of Hamilton  
03 5571 1200

Hamilton Town Bus Service  
03 5571 1682

**RIGHT**  
Gunditjmarara/Boandik Elder,  
Uncle Johnny Lovett at Lake  
Hamilton's Aboriginal Sundial



**ABOVE**  
Grampians Helicopters

**LEFT**  
Trotters Coaches at the Dunkeld  
Racecourse



## design & print

From welcome signage, directional prompts & branded media walls to lovingly-printed menus, programs & event collateral, you can have it designed, printed & delivered to your event by local suppliers.

Ivory Print  
03 5572 1121  
info@ivoryprint.com.au

Hamilton Digital Printing  
0438 564 213  
donkersm@bigpond.com

SpecPrint  
03 5551 3822  
specprint@spec.com.au

David Rowe Sign Design  
03 5571 1997  
sales@davidrowesigndesign.com

Pumadecals Signs & Stickers  
0417 584 886  
paulswork@live.com

AceDigital  
03 9928 4888  
acereception@team.aceradio.com.au

## photographers & videographers

We have a number of talented locals ready to capture your event in memorable visuals, whether that's still photography or engaging video content. Search for these local contacts to see their style and find your perfect fit!

### photographers

Bespoke Design Co

Darkroom Studios

Felicity Stubbs Photography

Gill Fry Photography

Jill Frawley Photography

Little Fish Photography

Little Wild Love Photography

One Day Collective

Tracey Kruger

Zen Photography

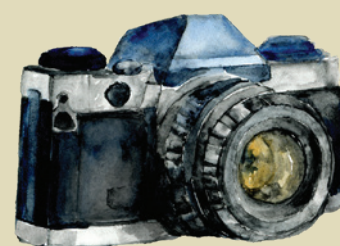
### photographers & videographers

Angela Kenna Photography

We Met in June

### videographers

Alexander & Vincent Media



TOP  
Capture your event using  
talented local professionals

## florists



Add a touch of life to your event, be it sculptural installations & backdrops, sophisticated centre-pieces, wild & modern floral art, or even sustainable wildflowers.

The Regent Florist  
03 5572 4547  
regentflorist@interfloraflorist.com.au

For the Love of Flora  
0419 316 358  
fortheloveofflora@gmail.com

Gray St Flowers  
03 5572 2000  
linda@graystflowers.com.au

Willow Violet & Flora  
0438 305 658  
lisaaddinsall@hotmail.com

Wallabadah Flowers  
0437 864 454  
wallabadahflowers@activ8.net.au

Pierrepoint Proteas  
0418 515 564  
alisonjbrown3@gmail.com

## styling & hire companies

Whether you want aesthetic picnic styling for ground-or table-seated events from Premium Picnics, or chair covers, balloon arches & table settings by Eventful Hire & Design, you can get it nearby.

Hire marquees and style your event with wine barrels, tables, chairs & umbrellas from **South West Wedding & Event Hire**, alongside candles and chair sashes from **Decorations by Katrina**, and tablecloths from **Hamilton Laundry & Dry Cleaners**. A fun Mirror Photobooth can be delivered alongside dry ice and lighting from DJ/MC **James Laversha**, and audio & lighting can be organised by **Hunter & Co Productions**. For events in unique outdoor spaces, arrange marquees and portable toilets from **Luke's Party Hire** and cool rooms or generators from **Hamilton Hire**. We also have contacts for nearby businesses offering everything from pop-up bars and bedouin tents to inflatables and jukeboxes, plus service providers including event managers, AV technicians, celebrants and MCs. Just ask!

South West Wedding & Event Hire  
0417 036 441  
swweddingeventhire@aussiebroadband.com.au

Decorations by Katrina  
0438 065 213  
kats75@bigpond.com

Hamilton Laundry & Drycleaners  
03 5571 2631  
hlhc@bigpond.com

Premium Picnics  
0478 564 546  
contactpremiumpicnics@gmail.com

James Laversha Personalised  
Entertainment  
0418 926 983  
james@jlpe.com.au

Hunter & Co. Productions  
0409 564 546  
huntercoproductions@outlook.com

Luke's Party Hire  
0418 583 937

Hamilton Hire  
03 5571 1999  
hamiltonhire@bigpond.com

Eventful Hire & Design  
0413 647 573  
petaanderson@live.com

TOP  
Premium Picnics  
Event Styling



next steps

# WHAT NOW?

So, you're inspired to meet in Southern Grampians...

Our Events Officer is ready to help you bring together all the important elements of organizing group travel and corporate events into one seamless, memorable experience for your attendees.

With the support of our Visitor Experience Team, we can assist you to select what's most relevant and rewarding for your group.

1

Connect  
with us

Receive personalised assistance informed by our local knowledge, and access the most relevant forms of support for your event.

2

Craft your  
perfect  
event

The fun part! Cherry-pick the venues, experiences and suppliers most suited to your needs to create your final itinerary.

3

Get  
excited!

Let us know what you've arranged and we can provide visual content to help promote your event and boost delegate numbers, and discuss potential additional support.

## CONTACT US

Southern Grampians Shire Council  
Events Marketing & Development  
Officer

1 Market Place, Hamilton, VIC 3300

Hours: 8.30am-5pm Mon-Fri

events@sthgrampians.vic.gov.au

## MAIN

Visit in Spring/Summer for expansive views of golden canola fields

## index



## A

Accommodation . . . . . P. 37  
Activities . . . . . P. 38  
Alexandra House . . . . . P. 31  
Arrandoovong Homestead . . . . . P. 27

## B

Blue Malt . . . . . P. 31

## C

Caterers & Food Trucks . . . . . P. 48  
Chevalier Centre & Monivae  
Cricket Hub . . . . . P. 24  
Cultural Services . . . . . P. 50

## F

Florists . . . . . P. 53

## G

Grampians Retreat . . . . . P. 20  
Grange Burn Motel . . . . . P. 30

## H

Hamilton Gallery . . . . . P. 23  
Hamilton District Skills Centre . . . . . P. 28  
Hamilton Exhibition &  
Conference Centre & Showgrounds . P. 21  
Hamilton Golf Club . . . . . P. 26  
Hamilton Harness Racing Club . . . . . P. 35

Hamilton Institute of Rural Learning  
(HIRL) . . . . . P. 27  
HILAC . . . . . P. 34  
Hamilton Performing Arts Centre  
& Cinema . . . . . P. 22  
Hamilton Racing Club . . . . . P. 26

## K

Kantor Family Music & Performing  
Arts Centre . . . . . P. 25

## L

Lonsdale Motel . . . . . P. 30

## M

Melvile Oval . . . . . P. 34

## O

Off the Rails Dunkeld . . . . . P. 33  
Obsidian Room . . . . . P. 29

## P

Pedrina Park . . . . . P. 35  
Photographers . . . . . P. 52  
Pierrepont Wines . . . . . P. 32  
Printers . . . . . P. 52

## R

Royal Mail Hotel . . . . . P. 18

## S

Southern Grampians  
Wilderness Retreat . . . . . P. 36  
Sterling Place - Dunkeld  
Community Centre . . . . . P. 19  
Stylists & Hire Companies . . . . . P. 53  
South West TAFE . . . . . P. 29

## T

The District Collective . . . . . P. 33  
Transport . . . . . P. 51

## V

Volcanoes Discovery Centre . . . . . P. 32  
Videographers . . . . . P. 52

## W

WDHS Learning Centre . . . . . P. 28

Southern Grampians Shire Council, including its officers, agents and contractors ("Publisher"), has made every endeavour to ensure that details appearing in this publication are correct at the time of printing. The Publisher accepts no responsibility for any inaccuracy or mis-description, whether by inclusion or omission, and details are subject to alteration without notice. The Publisher makes no representation or guarantee in relation to the standard, class or fitness for purpose of a business, service or attraction included in this publication. Accordingly, the Publisher does not warrant or accept any liability in relation to the business, service or attraction having the correct permits, permissions, licenses and insurances. We encourage you to undertake your own due diligence when planning your events.



*meet in*  
**SOUTHERN  
GRAMPIANS**

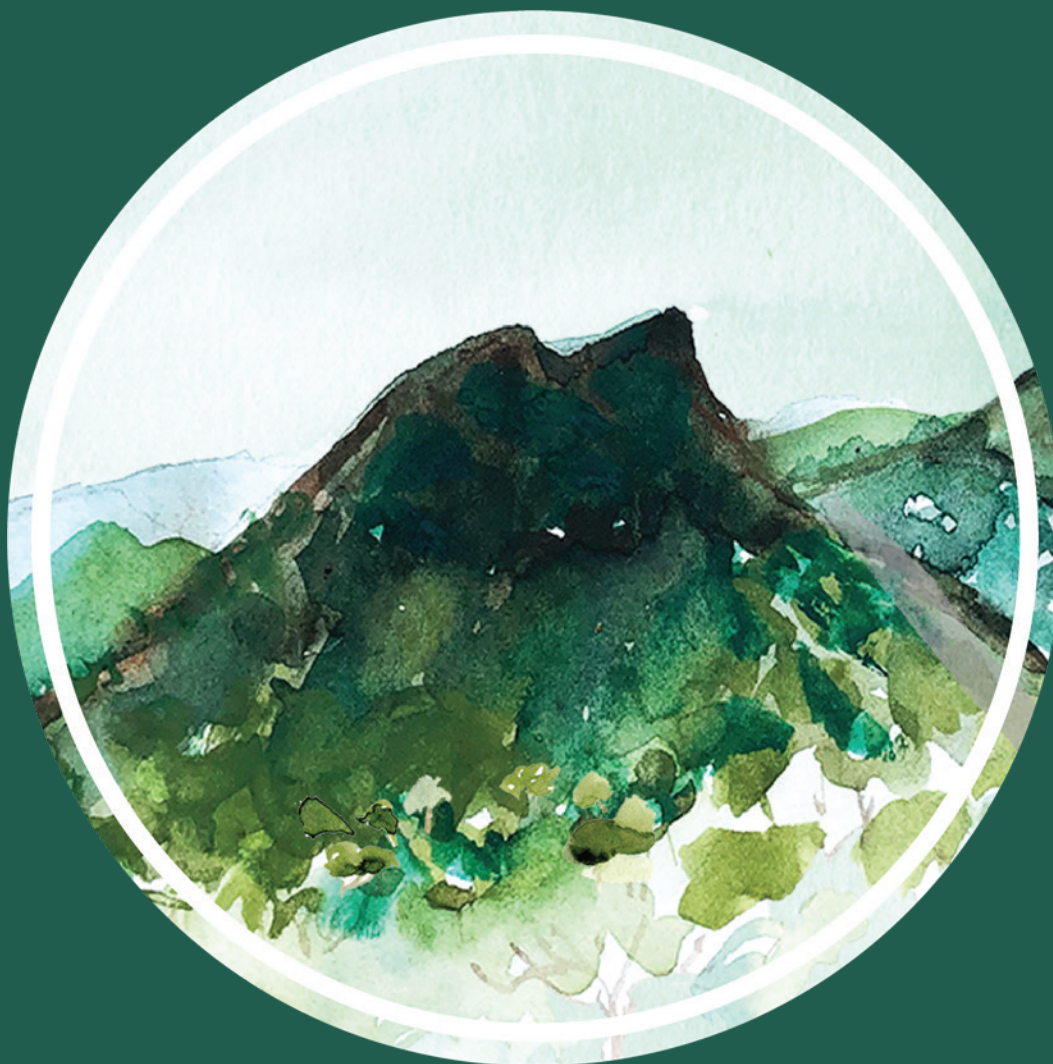
**SOUTHERN GRAMPIANS SHIRE COUNCIL**

1 Market Place, Hamilton VIC 3300

P: 03 5573 0239

E: [events@sthgrampians.vic.gov.au](mailto:events@sthgrampians.vic.gov.au)

W: [www.meetinsoutherngrampians.com.au](http://www.meetinsoutherngrampians.com.au)



The publication was proudly created by Southern Grampians Shire Council's Visitor Experience Team with support from Business Events Australia and Business Events Victoria.